

Open camera or QR reader and
scan code to access this article
and other resources online.



Development of a Monoclonal Antibody PMab-295 Against Elephant Podoplanin

Yuma Kudo,^{1,*} Hiroyuki Suzuki,^{1,*} Mika K. Kaneko,² and Yukinari Kato^{1,2}

Podoplanin (PDPN) is an essential marker of lung type I alveolar cells, kidney podocytes, and lymphatic endothelial cells. Monoclonal antibodies (mAbs) that can specifically recognize PDPN in immunohistochemistry are important to analyze the development of tissues and the pathogenesis of diseases, including cancers. We have developed anti-PDPN mAbs against many animal species; however, mAbs that can recognize elephant-derived membrane proteins and distinguish the specific cell types in immunohistochemistry are limited. In this study, a novel anti-elephant PDPN (elePDPN) mAb, PMab-295 (IgG₁, kappa), was established using the peptide immunization method. PMab-295 recognized both elePDPN-overexpressed Chinese hamster ovary (CHO)-K1 cells and endogenous elePDPN-expressed LACF-NaNaI cells by flow cytometry and western blotting. Kinetic analyses using flow cytometry showed that the K_D of PMab-295 for CHO/elePDPN was 1.5×10^{-8} M. Furthermore, PMab-295 detected elePDPN-expressing cells using immunohistochemistry. These results showed the usefulness of PMab-295 to investigate the molecular function of elePDPN and the pathogenesis of diseases.

Keywords: elephant podoplanin, monoclonal antibody, immunohistochemistry

Introduction

PODOPLANIN (PDPN) IS a mucin-type type I transmembrane glycoprotein and is known as an important marker of lung type I alveolar cells,^(1,2) kidney podocytes,⁽³⁾ and lymphatic endothelial cells.^(4,5) In humans, PDPN has been reported to be overexpressed in cancers and plays crucial roles in cancer cell migration, invasion, and metastasis.⁽⁶⁾ Therefore, anti-PDPN monoclonal antibodies (mAbs) are useful to distinguish the specific cell types and investigate the PDPN-expressing cancer cells.

We have developed anti-PDPN mAbs for cat,⁽⁷⁾ tiger,⁽⁸⁾ horse,⁽⁹⁾ pig,⁽¹⁰⁾ goat,⁽¹¹⁾ alpaca,⁽¹²⁾ Tasmanian devil,⁽¹³⁾ bear,⁽¹⁴⁾ whale,⁽¹⁵⁾ sheep,⁽¹⁶⁾ California sea lion,⁽¹⁷⁾ golden hamster,^(18,19) and ferret⁽²⁰⁾ using the Cell-Based Immunization and Screening (CBIS) method. These mAbs are available for flow cytometry, western blotting, and immunohistochemistry. However, an anti-elephant PDPN (elePDPN) mAb (clone PMab-265), which was established by the CBIS method, can be applicable only for flow cytometry, but not for the other applications.⁽²¹⁾ In this study, we used the pep-

tide immunization methods to obtain novel mAbs against elePDPN and investigated the several applications, including flow cytometry, western blotting, and immunohistochemistry.

Materials and Methods

Cell lines

Chinese hamster ovary (CHO)-K1 and P3X63Ag8U.1 (P3U1) cells were obtained from the American Type Culture Collection (Manassas, VA). African savanna elephant fibroblast-like cells (LACF-NaNaI) were obtained from the RIKEN BioResource Center (Ibaraki, Japan).⁽²¹⁾ The elePDPN ORF with N-terminal RIEDL tag (RIEDL-elePDPN) was expressed in CHO-K1 cells, and previously named as CHO/elePDPN.⁽²¹⁾ P3U1, CHO-K1, and CHO/elePDPN cells were cultured in RPMI-1640 (Nacalai Tesque, Inc., Kyoto, Japan) supplemented with 10% heat-inactivated fetal bovine serum (FBS; Thermo Fisher Scientific, Inc.), 100 U/mL penicillin, 100 μ g/mL streptomycin, and 0.25 μ g/mL amphotericin B (Nacalai Tesque, Inc.) and were incubated at 37°C in a

Departments of ¹Molecular Pharmacology and ²Antibody Drug Development, Tohoku University Graduate School of Medicine, Sendai, Japan.

*These authors contributed equally to this work.

humidified atmosphere containing 5% CO₂. LACF-NaNaI cells were cultured in minimum essential medium (Nacalai Tesque, Inc.), supplemented with 10% heat-inactivated FBS (Thermo Fisher Scientific, Inc.), 100 U/mL penicillin, 100 µg/mL streptomycin, and 0.25 µg/mL amphotericin B (Nacalai Tesque, Inc.), 5 µg/mL Plasmocin (InvivoGen), and 1 mM L-sodium pyruvate (Nacalai Tesque, Inc.) and were incubated at 37°C in a humidified atmosphere containing 5% CO₂.

Hybridoma production

Female BALB/c mice (6-week old) were purchased from CLEA, Japan (Tokyo, Japan). Animals were housed under specific pathogen-free conditions. The animal care and use committee of Tohoku University approved all animal experiments. The elePDPN peptide immunization method was used to develop mAbs against elePDPN. Briefly, two mice were immunized, using three keyhole limpet hemocyanin-conjugated elePDPN peptides (100 µg of each peptide), including ₃₈-EGGMVIPGVEDNMV₋₅₁, + C-terminal cyste-

ine. The administration was conducted through the intraperitoneal route with an Imject Alum (Thermo Fisher Scientific, Inc.). The procedure included three additional immunization procedures (100 µg of each peptide), followed by a final booster intraperitoneal injection (100 µg of each peptide) 2 days before its spleen cells were harvested. The harvested spleen cells were subsequently fused with P3U1 cells, using polyethylene glycol 1500 (PEG1500; Roche Diagnostics, Indianapolis, IN). Then, hybridomas were grown in an RPMI medium supplemented with hypoxanthine, aminopterin, and thymidine for selection (Thermo Fisher Scientific, Inc.). Cultured supernatants were finally screened using enzyme-linked immunosorbent assay (ELISA) and flow cytometric analysis.

Enzyme-linked immunosorbent assay

Synthesized elePDPN peptides (₃₈-EGGMVIPGVEDNMV₋₅₁, + C-terminal cysteine) were immobilized on Nunc MaxiSorp 96-well immunoplates (Thermo Fisher Scientific, Inc.) at a concentration of 1 µg/mL for 30 minutes at 37°C.

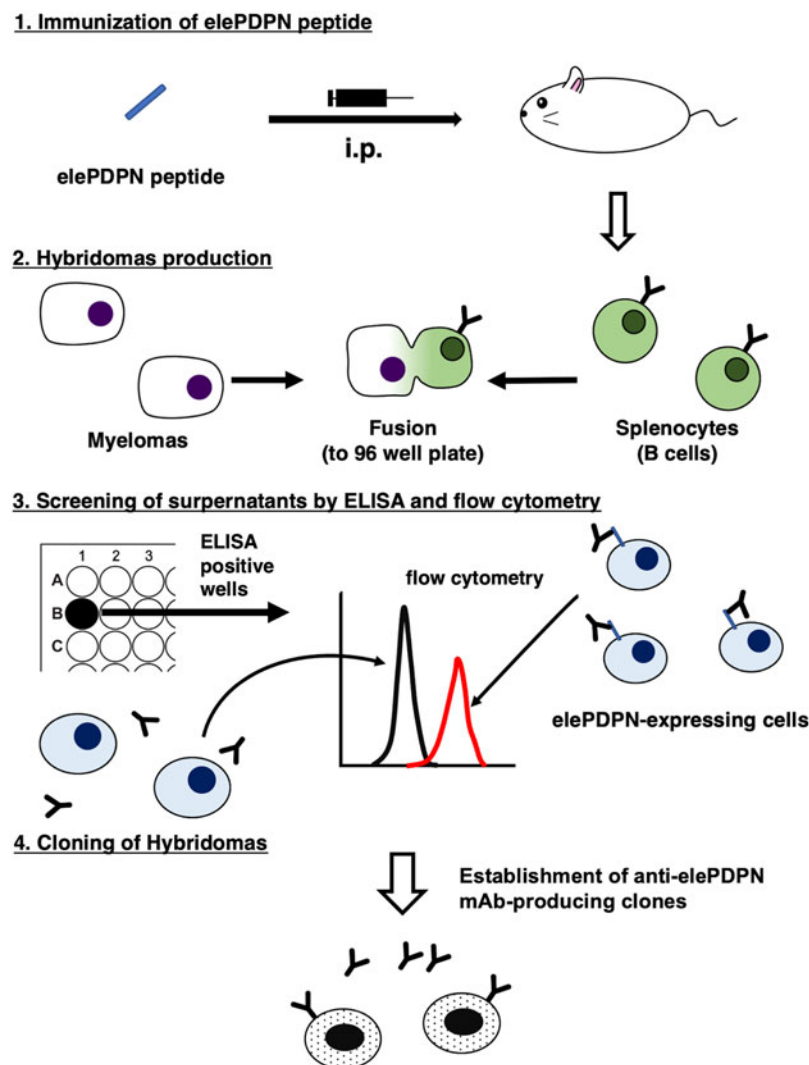


FIG. 1. A schematic procedure of anti-elePDPN mAb production. Mice were intraperitoneally immunized with the elePDPN peptide. The screening was then conducted by ELISA and flow cytometry. elePDPN, elephant PDPN; ELISA, enzyme-linked immunosorbent assay; mAbs, monoclonal antibodies.

After washing with phosphate-buffered saline (PBS) containing 0.05% Tween-20 (Nacalai Tesque, Inc.), wells were blocked with 1% bovine serum albumin (BSA)-containing PBST for 30 minutes at 37°C. Culture supernatants were added to each well, followed by peroxidase-conjugated anti-mouse immunoglobulins (1:2000 diluted; Agilent Technologies, Inc., Santa Clara, CA). Afterward, enzymatic reactions were conducted, using the ELISA POD Substrate TMB Kit (Nacalai Tesque, Inc.), followed by the measurement of the optical density at 655 nm, using an iMark microplate reader (Bio-Rad Laboratories, Inc., Berkeley, CA).

Flow cytometry

Cells (2×10^5 cells/mL) were harvested after brief exposure to 0.25% trypsin in 1 mM ethylenediaminetetraacetic acid (EDTA; Nacalai Tesque, Inc.). After washing with 0.1% BSA (Nacalai Tesque, Inc.) in PBS (Nacalai Tesque, Inc.),

cells were treated with PMab-295 ($1 \mu\text{g/mL}$) for 30 minutes at 4°C, followed by Alexa Fluor 488-conjugated anti-mouse IgG (1:1000; product no. 4408; Cell Signaling Technology, Inc., Danvers, MA). Finally, fluorescence data were collected using SA3800 Cell Analyzer (Sony Biotechnology Corp., Tokyo, Japan).

Determining the binding affinity of cells

Cells were suspended in 100 μL serially-diluted PMab-295 (0.006–100 $\mu\text{g/mL}$), followed by a subsequent suspension in an Alexa Fluor 488-conjugated anti-mouse IgG solution (1:200; Cell Signaling Technology, Inc.). Then, fluorescence data were collected, using the BD FACSLyric (BD Biosciences, Franklin Lakes, NJ). By fitting binding isotherms to built-in one-site binding models in GraphPad Prism 8 (GraphPad Software, Inc., La Jolla, CA), the dissociation constant (K_D) was finally calculated.

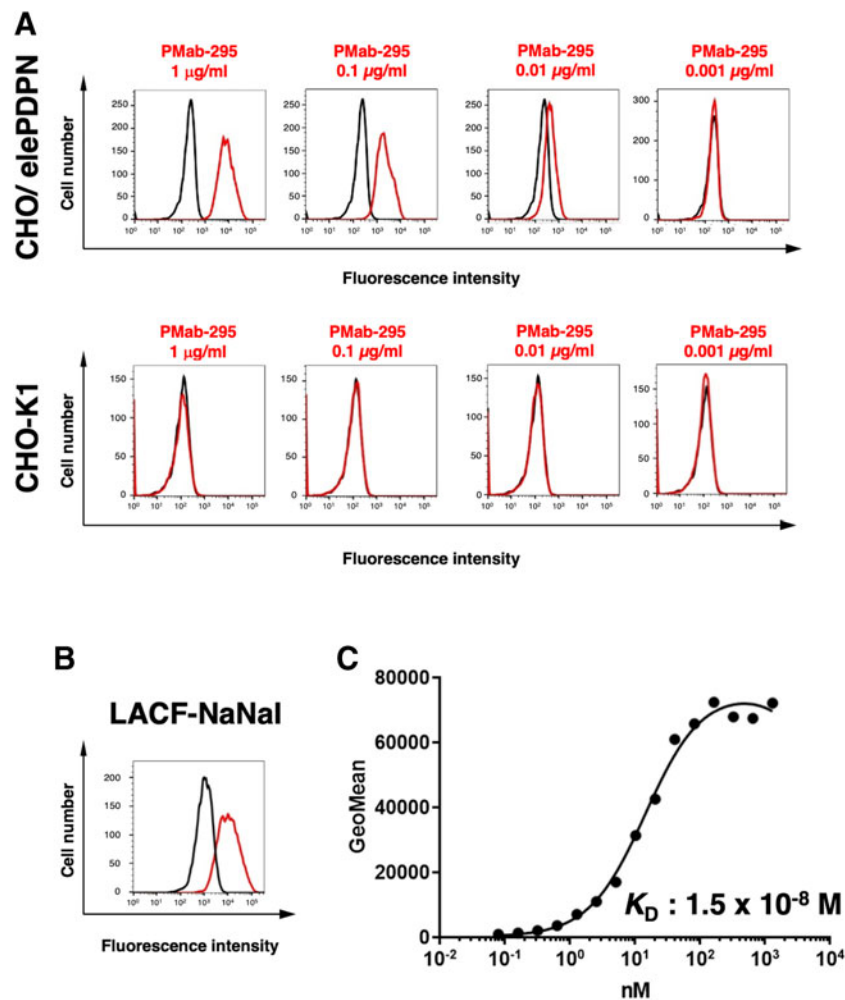


FIG. 2. Flow cytometry using anti-elePDPN mAb, PMab-295. (A) CHO-K1 and CHO/elePDPN cells were treated with 1–0.001 $\mu\text{g/mL}$ of PMab-295, followed by treatment with Alexa Fluor 488-conjugated anti-mouse IgG. The black line represents the negative control. (B) LACF-NaNaI cells were treated with 1 $\mu\text{g/mL}$ of PMab-295, followed by treatment with Alexa Fluor 488-conjugated anti-mouse IgG. The black line represents the negative control. (C) CHO/elePDPN cells were suspended in 100 μL serially-diluted PMab-295 (100–0.0006 $\mu\text{g/mL}$), following subsequent treatment with Alexa Fluor 488-conjugated anti-mouse IgG. Fluorescence data were subsequently collected using a BD FACSLyric, after which we calculated the dissociation constant (K_D) using GraphPad PRISM 8. CHO, Chinese hamster ovary.

Western blotting

Cell lysates (10 μ g) were boiled in sodium dodecyl sulfate sample buffer (Nacalai Tesque, Inc.), after which proteins were separated on 5%–20% polyacrylamide gels (FUJIFILM Wako Pure Chemical Corporation, Osaka, Japan) and transferred to polyvinylidene difluoride membranes (Merck KGaA, Darmstadt, Germany). After blocking with 4% skim milk (Nacalai Tesque, Inc.) in 0.05% Tween 20-containing PBS, membranes were incubated with 1 μ g/mL of PMab-295 or an anti-isocitrate dehydrogenase 1 (IDH1) mAb (RMab-3).^(22–25) Then, they were incubated again with peroxidase-conjugated anti-mouse immunoglobulins (diluted 1:1000; Agilent Technologies, Inc.). Finally, protein bands were detected using ImmunoStar LD (FUJIFILM Wako Pure Chemical Corporation) and a Sayaca-Imager (DRC Co. Ltd., Tokyo, Japan).

Immunohistochemical analysis

Cell blocks were produced using iPGell (Genostaff Co., Ltd., Tokyo, Japan)^(1,3) and processed to make 4 μ m thick paraffin-embedded cell sections that were directly autoclaved in a citrate buffer (pH 6.0; Nichirei Biosciences, Inc., Tokyo, Japan) for 20 minutes. These tissue sections were blocked using the SuperBlock T20 (PBS) Blocking Buffer (Thermo Fisher Scientific, Inc.), incubated with PMab-295 (5 μ g/mL) for 1 hour at the room temperature, and then treated with the EnVision+Kit (Agilent Technologies, Inc.) for 30 minutes. Color was developed using 3,3'-diaminobenzidine tetrahydrochloride (Agilent Technologies, Inc.) for 2 minutes, and counterstaining was performed using hematoxylin (FUJIFILM Wako Pure Chemical Corporation).

Results

Establishment of anti-elePDPN mAbs

To develop anti-elePDPN mAbs, we used the elePDPN peptide immunization method. We designed the peptide in the platelet aggregation-stimulating domain of elePDPN since we could successfully generate anti-PDPN mAbs in various species using this strategy.^(26–37) Hybridoma screening was conducted using ELISA and flow cytometry (Fig. 1). Mice were immunized with elePDPN synthetic peptides. Subsequently, hybridomas were seeded into 96-well plates, after which ELISA was used to extract positive wells for elePDPN peptides, followed by the selection of CHO/elePDPN-reactive and CHO-K1-nonreactive supernatants using flow cytometry. Finally, we established seven clones, which are applicable for flow cytometry. Among them, we selected PMab-295 (mouse IgG₁, kappa) for further analysis.

Flow cytometric analyses

Flow cytometric analyses were conducted using PMab-295 with CHO/elePDPN and CHO-K1 cells. PMab-295 recognized CHO/elePDPN dose dependently. In contrast, it did not react with CHO-K1 cells (Fig. 2A). PMab-295 also reacted with endogenous elePDPN, which is expressed in an African savanna elephant fibroblast-like cell line, LACF-NaNaI (Fig. 2B). Furthermore, kinetic analysis of PMab-295 interactions with CHO/elePDPN cells was conducted using flow cytometry. As indicated in Figure 2C, the K_D for PMab-

295 interactions with CHO/elePDPN cells was 1.5×10^{-8} M, suggesting that PMab-295 exhibited a moderate affinity against elePDPN.

Western blotting

Western blotting was conducted to further assess the sensitivity of PMab-295. For this assessment, lysates of CHO-K1, CHO/elePDPN, and LACF-NaNaI cells were probed. As demonstrated in Figure 3, PMab-295 detected double bands (between 35 and 48 kDa) of elePDPN in lysates from CHO/elePDPN cells, whereas these bands were absent in lysates from CHO-K1 cells. Furthermore, PMab-295 detected the endogenous elePDPN (about 40 kDa) in lysates from LACF-NaNaI cells. These results indicated that PMab-295 specifically detected both exogenous and endogenous elePDPN by western blotting.

Immunohistochemical analyses

We next investigated whether PMab-295 can be used for immunohistochemical analyses using paraffin-embedded cell (CHO-K1, CHO/elePDPN, and LACF-NaNaI cells) sections. PMab-295 strongly stained the CHO/elePDPN cell-embedded section, but not CHO-K1-embedded section (Fig. 4A, B).

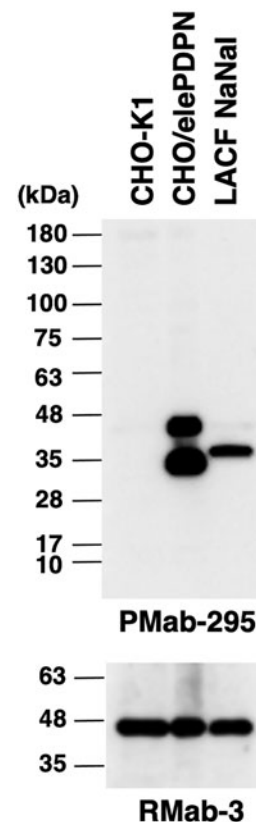


FIG. 3. Western blotting using PMab-295. Cell lysates (10 μ g) of CHO-K1 and CHO/elePDPN and LACF-NaNaI cells were electrophoresed, after which proteins were transferred to PVDF membranes. After blocking, membranes were subsequently incubated with 1 μ g/mL of PMab-295 or anti-IDH1 (RMab-3), following incubation with peroxidase-conjugated anti-mouse immunoglobulins. IDH1, isocitrate dehydrogenase 1; PVDF, polyvinylidene difluoride.

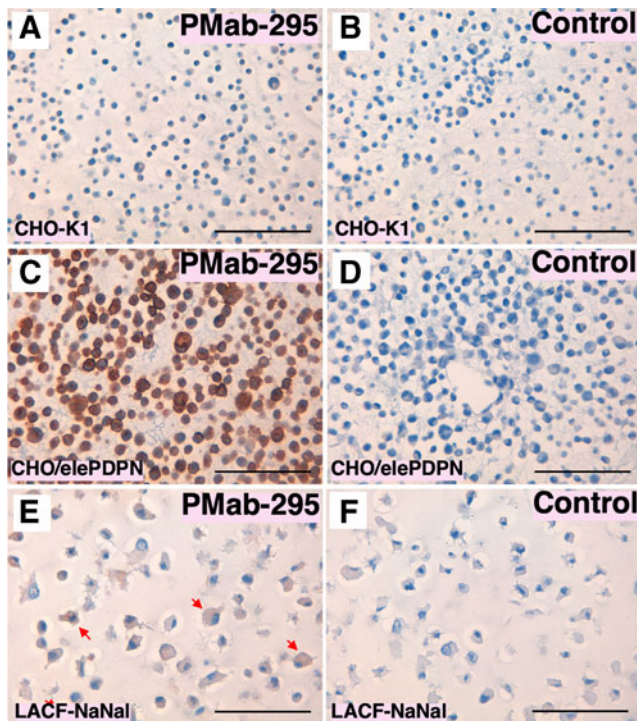


FIG. 4. Immunohistochemical analyses. The paraffin-embedded cell sections of CHO-K1 (A, B) and CHO/elePDPN (C, D) and LACF-NaNaI (E, F) cells were incubated with 5 μ g/mL of PMAb-295 (A, C, E) or with blocking buffer control (B, D, F), followed by that with the Envision+Kit. Arrows show elePDPN-expressing LACF-NaNaI cells. Scale bar = 100 μ m.

Moreover, PMAb-295 weakly stained the LACF-NaNaI cell-embedded section (Fig. 4C). These results indicate the usefulness of PMAb-295 for detecting elePDPN-positive cells in paraffin-embedded cell samples.

Discussion

Previously, we established an anti-elePDPN mAb (clone PMAb-265), which is only applicable for flow cytometry.⁽²¹⁾ In this study, we established a novel anti-elePDPN mAb (clone PMAb-295), which is useful for flow cytometry, western blotting, and immunohistochemistry. Especially, PMAb-295 could stain paraffin-embedded cells (Fig. 4). Therefore, PMAb-295 can be used to detect and analyze the development and pathogenesis of elephant tissues. Further studies are required to show whether PMAb-295 can identify the elephant lung type I alveolar cells, kidney podocytes, and lymphatic endothelial cells.

Recently, the pathogenesis of elephant endotheliotropic herpesvirus-hemorrhagic disease has been reported as the most profound viral infectious disease in young Asian elephants (*Elephas maximus*).^(38–41) These studies investigated the pathogenesis of the affected tissues, including heart, liver, lung, kidney, and intestine by hematoxylin and eosin staining and immunohistochemistry. Especially a study showed the increases in platelet endothelial cell adhesion molecules-1, and von Willebrand factor positive cells were significantly observed in injured blood vessels.⁽⁴⁰⁾ PMAb-295 could contribute to the analyses of the pathogenesis as a lymphatic

endothelial marker. Furthermore, PMAb-295 will contribute to the analyses of the injured lung and kidney in the future.

The incidence of elephant cancer is known to be extremely rare. However, about 3% of elephants develop cancer.^(42,43) PDPN is overexpressed in many human cancers, including squamous cell carcinomas (head and neck,⁽⁴⁴⁾ lung,⁽⁴⁵⁾ uterine,⁽⁴⁶⁾ oral,⁽⁴⁷⁾ and esophageal⁽⁴⁸⁾ carcinomas), malignant mesotheliomas,^(49–55) sarcomas,^(56,57) and malignant gliomas.^(26,58–65) Recent study reported the reproductive tract neoplasia in 80 adult female Asian elephant mortalities in the United States from 1988 to 2019. Neoplasms occurred in 64/80 (80%) of cases. Most were in the uterus (63/64; 98%) with only a single case of ovarian neoplasia. This study also investigated the expression of pan-cytokeratin, vimentin, and estrogen receptor in the uterine carcinomas by immunohistochemistry.⁽⁶⁶⁾ Therefore, the analysis of elephant carcinomas by PMAb-295 will help the elucidation of the mechanism of cancer development and the classification of neoplasia.

Author Disclosure Statement

No competing financial interests exist.

Funding Information

This research was supported, in part, by Japan Agency for Medical Research and Development (AMED) under grant nos: JP22ama121008 (to Y.K.), JP22am0401013 (to Y.K.), JP22bm1004001 (to Y.K.), JP22ck0106730 (to Y.K.), and JP21am0101078 (to Y.K.).

References

1. Dobbs LG, Williams MC, and Gonzalez R: Monoclonal antibodies specific to apical surfaces of rat alveolar type I cells bind to surfaces of cultured, but not freshly isolated, type II cells. *Biochim Biophys Acta* 1988;970:146–156.
2. Rishi AK, Joyce-Brady M, Fisher J, Dobbs LG, Floros J, VanderSpek J, Brody JS, and Williams MC: Cloning, characterization, and development expression of a rat lung alveolar type I cell gene in embryonic endodermal and neural derivatives. *Dev Biol* 1995;167:294–306.
3. Breiteneder-Geleff S, Matsui K, Soleiman A, Meraner P, Poczewski H, Kalt R, Schaffner G, and Kerjaschki D: Podoplanin, novel 43-kd membrane protein of glomerular epithelial cells, is down-regulated in puromycin nephrosis. *Am J Pathol* 1997;151:1141–1152.
4. Hirakawa S, Hong YK, Harvey N, Schacht V, Matsuda K, Libermann T, and Detmar M: Identification of vascular lineage-specific genes by transcriptional profiling of isolated blood vascular and lymphatic endothelial cells. *Am J Pathol* 2003;162:575–586.
5. Petrova TV, Mäkinen T, Mäkelä TP, Saarela J, Virtanen I, Ferrell RE, Finegold DN, Kerjaschki D, Ylä-Herttuala S, and Alitalo K: Lymphatic endothelial reprogramming of vascular endothelial cells by the Prox-1 homeobox transcription factor. *EMBO J* 2002;21:4593–4599.
6. Quintanilla M, Montero-Montero L, Renart J, and Martín-Villar E: Podoplanin in Inflammation and Cancer. *Int J Mol Sci* 2019;20.
7. Yamada S, Itai S, Nakamura T, Yanaka M, Saidoh N, Chang YW, Handa S, Harada H, Kagawa Y, Ichii O, Konnai S, Kaneko MK, and Kato Y: PMAb-52: Specific and sensitive monoclonal antibody against cat podoplanin for

- immunohistochemistry. *Monoclon Antib Immunodiagn Immunother* 2017;36:224–230.
8. Furusawa Y, Kaneko MK, Nakamura T, Itai S, Fukui M, Harada H, Yamada S, and Kato Y: Establishment of a monoclonal antibody PMab-231 for tiger podoplanin. *Monoclon Antib Immunodiagn Immunother* 2019;38:89–95.
 9. Furusawa Y, Yamada S, Itai S, Sano M, Nakamura T, Yanaka M, Handa S, Mizuno T, Maeda K, Fukui M, Harada H, Kaneko MK, and Kato Y: Establishment of monoclonal antibody PMab-202 against horse podoplanin. *Monoclon Antib Immunodiagn Immunother* 2018;37:233–237.
 10. Kato Y, Yamada S, Furusawa Y, Itai S, Nakamura T, Yanaka M, Sano M, Harada H, Fukui M, and Kaneko MK: PMab-213: A monoclonal antibody for immunohistochemical analysis against pig podoplanin. *Monoclon Antib Immunodiagn Immunother* 2019;38:18–24.
 11. Furusawa Y, Yamada S, Nakamura T, Sano M, Sayama Y, Itai S, Takei J, Harada H, Fukui M, Kaneko MK, and Kato Y: PMab-235: A monoclonal antibody for immunohistochemical analysis against goat podoplanin. *Heliyon* 2019;5:e02063.
 12. Kato Y, Furusawa Y, Yamada S, Itai S, Takei J, Sano M, and Kaneko MK: Establishment of a monoclonal antibody PMab-225 against alpaca podoplanin for immunohistochemical analyses. *Biochem Biophys Rep* 2019;18:100633.
 13. Furusawa Y, Yamada S, Itai S, Nakamura T, Takei J, Sano M, Harada H, Fukui M, Kaneko MK, and Kato Y: Establishment of a monoclonal antibody PMab-233 for immunohistochemical analysis against Tasmanian devil podoplanin. *Biochem Biophys Rep* 2019;18:100631.
 14. Furusawa Y, Takei J, Sayama Y, Yamada S, Kaneko MK, and Kato Y: Development of an anti-bear podoplanin monoclonal antibody PMab-247 for immunohistochemical analysis. *Biochem Biophys Rep* 2019;18:100644.
 15. Kato Y, Furusawa Y, Itai S, Takei J, Nakamura T, Sano M, Harada H, Yamada S, and Kaneko MK: Establishment of an anticetacean podoplanin monoclonal antibody PMab-237 for immunohistochemical analysis. *Monoclon Antib Immunodiagn Immunother* 2019;38:108–113.
 16. Kato Y, Furusawa Y, Sano M, Takei J, Nakamura T, Yanaka M, Okamoto S, Handa S, Komatsu Y, Asano T, Sayama Y, and Kaneko MK: Development of an anti-sheep podoplanin monoclonal antibody PMab-256 for immunohistochemical analysis of lymphatic endothelial cells. *Monoclon Antib Immunodiagn Immunother* 2020;39:82–90.
 17. Tanaka T, Asano T, Sano M, Takei J, Hosono H, Nanamiya R, Nakamura T, Yanaka M, Harada H, Fukui M, Suzuki H, Uchida K, Nakagawa T, Kato Y, and Kaneko MK: Development of monoclonal antibody PMab-269 against California sea lion podoplanin. *Monoclon Antib Immunodiagn Immunother* 2021;40:124–133.
 18. Nanamiya R, Suzuki H, Takei J, Li G, Goto N, Harada H, Saito M, Tanaka T, Asano T, Kaneko MK, and Kato Y: Development of monoclonal antibody 281-mG2a-f against golden hamster podoplanin. *Monoclon Antib Immunodiagn Immunother* 2022; doi: 10.1089/mab.2021.0058.
 19. Goto N, Suzuki H, Tanaka T, Asano T, Kaneko MK, and Kato Y: Epitope mapping of an anti-Chinese/golden hamster podoplanin monoclonal antibody. *Monoclon Antib Immunodiagn Immunother* 2022;41:163–169.
 20. Goto N, Suzuki H, Tanaka T, Asano T, Kaneko MK, and Kato Y: Development of a monoclonal antibody PMab-292 against ferret podoplanin. *Monoclon Antib Immunodiagn Immunother* 2022;41:101–109.
 21. Hosono H, Asano T, Takei J, Sano M, Tanaka T, Kaneko MK, and Kato Y: Development of an anti-elephant podoplanin monoclonal antibody PMab-265 for flow cytometry. *Monoclon Antib Immunodiagn Immunother* 2021;40:141–145.
 22. Takano S, Kato Y, Yamamoto T, Kaneko MK, Ishikawa E, Tsujimoto Y, Matsuda M, Nakai K, Yanagiya R, Morita S, Tsuboi K, and Matsumura A: Immunohistochemical detection of IDH1 mutation, p53, and internerxin as prognostic factors of glial tumors. *J Neurooncol* 2012;108:361–373.
 23. Takano S, Tian W, Matsuda M, Yamamoto T, Ishikawa E, Kaneko MK, Yamazaki K, Kato Y, and Matsumura A: Detection of IDH1 mutation in human gliomas: Comparison of immunohistochemistry and sequencing. *Brain Tumor Pathol* 2011;28:115–123.
 24. Kato Y: Specific monoclonal antibodies against IDH1/2 mutations as diagnostic tools for gliomas. *Brain Tumor Pathol* 2014;32:3–11.
 25. Kato Kaneko M, Ogasawara S, and Kato Y: Establishment of a multi-specific monoclonal antibody MsMab-1 recognizing both IDH1 and IDH2 mutations. *Tohoku J Exp Med* 2013;230:103–109.
 26. Kato Y, Kaneko MK, Kuno A, Uchiyama N, Amano K, Chiba Y, Hasegawa Y, Hirabayashi J, Narimatsu H, Mishima K, and Osawa M: Inhibition of tumor cell-induced platelet aggregation using a novel anti-podoplanin antibody reacting with its platelet-aggregation-stimulating domain. *Biochem Biophys Res Commun* 2006;349:1301–1307.
 27. Kato Y, Kaneko MK, Kunita A, Ito H, Kameyama A, Ogasawara S, Matsuura N, Hasegawa Y, Suzuki-Inoue K, Inoue O, Ozaki Y, and Narimatsu H: Molecular analysis of the pathophysiological binding of the platelet aggregation-inducing factor podoplanin to the C-type lectin-like receptor CLEC-2. *Cancer Sci* 2008;99:54–61.
 28. Wakasa A, Kaneko MK, Kato Y, Takagi J, and Arimori T: Site-specific epitope insertion into recombinant proteins using the MAP tag system. *J Biochem* 2020;168:375–384.
 29. Yamada S, Itai S, Kaneko MK, Konnai S, and Kato Y: Epitope mapping of anti-mouse podoplanin monoclonal antibody PMab-1. *Biochem Biophys Rep* 2018;15:52–56.
 30. Yamada S, Kaneko MK, Nakamura T, Ichii O, Konnai S, and Kato Y: Development of mPMab-1, a mouse-rat chimeric antibody against mouse podoplanin. *Monoclon Antib Immunodiagn Immunother* 2017;36:77–79.
 31. Kaneko M, Kato Y, Kunita A, Fujita N, Tsuruo T, and Osawa M: Functional sialylated O-glycan to platelet aggregation on Aggrus (T1alpha/podoplanin) molecules expressed in Chinese Hamster Ovary cells. *J Biol Chem* 2004; 279:38838–38843.
 32. Fujii Y, Kaneko MK, and Kato Y: MAP tag: A novel tagging system for protein purification and detection. *Monoclon Antib Immunodiagn Immunother* 2016;35:293–299.
 33. Kaji C, Tsujimoto Y, Kato Kaneko M, Kato Y, and Sawa Y: Immunohistochemical examination of novel rat monoclonal antibodies against mouse and human podoplanin. *Acta Histochem Cytochem* 2012;45:227–237.
 34. Oki H, Honma R, Ogasawara S, Fujii Y, Liu X, Takagi M, Kaneko MK, and Kato Y: Development of sensitive monoclonal antibody PMab-2 against rat podoplanin. *Monoclon Antib Immunodiagn Immunother* 2015;34:396–403.

35. Furusawa Y, Yamada S, Itai S, Nakamura T, Fukui M, Harada H, Kaneko MK, and Kato Y: Elucidation of critical epitope of anti-rat podoplanin monoclonal antibody PMab-2. *Monoclon Antib Immunodiagn Immunother* 2018;37:188–193.
36. Fujii Y, Kaneko MK, Ogasawara S, Yamada S, Yanaka M, Nakamura T, Saidoh N, Yoshida K, Honma R, and Kato Y: Development of RAP tag, a novel tagging system for protein detection and purification. *Monoclon Antib Immunodiagn Immunother* 2017;36:68–71.
37. Honma R, Fujii Y, Ogasawara S, Oki H, Liu X, Nakamura T, Kaneko MK, Takagi M, and Kato Y: Establishment of a novel monoclonal antibody PMab-32 against rabbit podoplanin. *Monoclon Antib Immunodiagn Immunother* 2016;35:41–47.
38. Srivorakul S, Guntawang T, Kochagul V, Photichai K, Sittisak T, Janyamethakul T, Boonprasert K, Khammesri S, Langkaphin W, Punyapornwithaya V, Chuammitri P, Thitaram C, and Pringproa K: Possible roles of monocytes/macrophages in response to elephant endotheliotropic herpesvirus (EEHV) infections in Asian elephants (*Elephas maximus*). *PLoS One* 2019;14:e0222158.
39. Guntawang T, Sittisak T, Srivorakul S, Kochagul V, Photichai K, Thitaram C, Sthitmatee N, Hsu WL, and Pringproa K: *In vivo* characterization of target cells for acute elephant endotheliotropic herpesvirus (EEHV) infection in Asian elephants (*Elephas maximus*). *Sci Rep* 2020;10:11402.
40. Guntawang T, Sittisak T, Kochagul V, Srivorakul S, Photichai K, Boonsri K, Janyamethakul T, Boonprasert K, Langkaphin W, Thitaram C, and Pringproa K: Pathogenesis of hemorrhagic disease caused by elephant endotheliotropic herpesvirus (EEHV) in Asian elephants (*Elephas maximus*). *Sci Rep* 2021;11:12998.
41. Yun Y, Sripiboon S, Pringproa K, Chuammitri P, Punyapornwithaya V, Boonprasert K, Tankaew P, Angkawanish T, Namwongprom K, Arjkumpa O, Brown JL, and Thitaram C: Clinical characteristics of elephant endotheliotropic herpesvirus (EEHV) cases in Asian elephants (*Elephas maximus*) in Thailand during 2006–2019. *Vet Q* 2021;41:268–279.
42. Abegglen LM, Caulin AF, Chan A, Lee K, Robinson R, Campbell MS, Kiso WK, Schmitt DL, Waddell PJ, Bhaskara S, Jensen ST, Maley CC, and Schiffman JD: Potential mechanisms for cancer resistance in elephants and comparative cellular response to DNA damage in humans. *JAMA* 2015;314:1850–1860.
43. Gaughran SJ, Pless E, and Stearns SC: How elephants beat cancer. *Elife* 2016;5.
44. Hsieh JC, Lin HC, Huang CY, Hsu HL, Wu TM, Lee CL, Chen MC, Wang HM, and Tseng CP: Prognostic value of circulating tumor cells with podoplanin expression in patients with locally advanced or metastatic head and neck squamous cell carcinoma. *Head Neck* 2015;37:1448–1455.
45. Kato Y, Kaneko M, Sata M, Fujita N, Tsuruo T, and Osawa M: Enhanced expression of Aggrus (T1alpha/podoplanin), a platelet-aggregation-inducing factor in lung squamous cell carcinoma. *Tumor Biol* 2005;26:195–200.
46. Stewart CJR, and Crook ML: Podoplanin and SOX2 expression in CIN 3-like squamous cell carcinoma of the cervix. *Int J Gynecol Pathol* 2018;37:59–67.
47. Yuan P, Temam S, El-Naggar A, Zhou X, Liu D, Lee J, and Mao L: Overexpression of podoplanin in oral cancer and its association with poor clinical outcome. *Cancer* 2006;107:563–569.
48. Chuang WY, Yeh CJ, Chao YK, Liu YH, Chang YS, Tseng CK, Chang HK, Wan YL, and Hsueh C: Concordant podoplanin expression in cancer-associated fibroblasts and tumor cells is an adverse prognostic factor in esophageal squamous cell carcinoma. *Int J Clin Exp Pathol* 2014;7:4847–4856.
49. Nishinaga Y, Sato K, Yasui H, Taki S, Takahashi K, Shimizu M, Endo R, Koike C, Kuramoto N, Nakamura S, Fukui T, Yukawa H, Baba Y, M KK, Chen-Yoshikawa TF, Kobayashi H, Kato Y, and Hasegawa Y: Targeted phototherapy for malignant pleural mesothelioma: Near-infrared photoimmunotherapy targeting podoplanin. *Cells* 2020;9:1019.
50. Sudo H, Tsuji AB, Sugyo A, Kaneko MK, Kato Y, Nagatsu K, Suzuki H, and Higashi T: Preclinical evaluation of podoplanin-targeted alpha-radioimmunotherapy with the novel antibody NZ-16 for malignant mesothelioma. *Cells* 2021;10:2503.
51. Sudo H, Tsuji AB, Sugyo A, Saga T, Kaneko MK, Kato Y, and Higashi T: Therapeutic efficacy evaluation of radioimmunotherapy with (90) Y-labeled anti-podoplanin antibody NZ-12 for mesothelioma. *Cancer Sci* 2019;110:1653–1664.
52. Kanayama M, Oyama R, Mori M, Taira A, Shinohara S, Kuwata T, Takenaka M, Yoneda K, Kuroda K, Ohnaga T, Kato Y, and Tanaka F: Novel circulating tumor cell-detection chip combining conventional podoplanin and EGFR antibodies for all histological malignant pleural mesothelioma. *Oncol Lett* 2021;22:522.
53. Abe S, Morita Y, Kaneko MK, Hanibuchi M, Tsujimoto Y, Goto H, Kakiuchi S, Aono Y, Huang J, Sato S, Kishuku M, Taniguchi Y, Azuma M, Kawazoe K, Sekido Y, Yano S, Akiyama S, Sone S, Minakuchi K, Kato Y, and Nishioka Y: A novel targeting therapy of malignant mesothelioma using anti-podoplanin antibody. *J Immunol* 2013;190:6239–6249.
54. Kuwata T, Yoneda K, Mori M, Kanayama M, Kuroda K, Kaneko MK, Kato Y, and Tanaka F: Detection of circulating tumor cells (CTCs) in malignant pleural mesothelioma (MPM) with the “universal” CTC-chip and an anti-podoplanin antibody NZ-1.2. *Cells* 2020;9.
55. Abe S, Kaneko MK, Tsuchihashi Y, Izumi T, Ogasawara S, Okada N, Sato C, Tobiume M, Otsuka K, Miyamoto L, Tsuchiya K, Kawazoe K, Kato Y, and Nishioka Y: Anti-tumor effect of novel anti-podoplanin antibody NZ-12 against malignant pleural mesothelioma in an orthotopic xenograft model. *Cancer Sci* 2016;107:1198–1205.
56. Suzuki H, Kato Y, Kaneko MK, Okita Y, Narimatsu H, and Kato M: Induction of podoplanin by transforming growth factor-beta in human fibrosarcoma. *FEBS Lett* 2008;582:341–345.
57. Kunita A, Kashima TG, Ohazama A, Grigoriadis AE, and Fukayama M: Podoplanin is regulated by AP-1 and promotes platelet aggregation and cell migration in osteosarcoma. *Am J Pathol* 2011;179:1041–1049.
58. Motomura K, Natsume A, Watanabe R, Ito I, Kato Y, Momota H, Nishikawa R, Mishima K, Nakasu Y, Abe T, Namba H, Nakazato Y, Tashiro H, Takeuchi I, Mori T, and Wakabayashi T: Immunohistochemical analysis-based proteomic subclassification of newly diagnosed glioblastomas. *Cancer Sci* 2012;103:1871–1879.
59. Shiina S, Ohno M, Ohka F, Kuramitsu S, Yamamichi A, Kato A, Motomura K, Tanahashi K, Yamamoto T, Watanabe R, Ito I, Senga T, Hamaguchi M, Wakabayashi T, Kaneko MK, Kato Y, Chandramohan V, Bigner DD, and

- Natsume A: CAR T cells targeting podoplanin reduce orthotopic glioblastomas in mouse brains. *Cancer Immunol Res* 2016;4:259–268.
60. Chandramohan V, Bao X, Kato Kaneko M, Kato Y, Keir ST, Szafranski SE, Kuan CT, Pastan IH, and Bigner DD: Recombinant anti-podoplanin (NZ-1) immunotoxin for the treatment of malignant brain tumors. *Int J Cancer* 2013; 132:2339–2348.
 61. Kato Y, Vaidyanathan G, Kaneko MK, Mishima K, Srivastava N, Chandramohan V, Pegram C, Keir ST, Kuan CT, Bigner DD, and Zalutsky MR: Evaluation of anti-podoplanin rat monoclonal antibody NZ-1 for targeting malignant gliomas. *Nucl Med Biol* 2010;37:785–794.
 62. Ochoa-Alvarez JA, Krishnan H, Pastorino JG, Nevel E, Kephart D, Lee JJ, Retzbach EP, Shen Y, Fatahzadeh M, Baredes S, Kalyoussef E, Honma M, Adelson ME, Kaneko MK, Kato Y, Young MA, Deluca-Rapone L, Shienbaum AJ, Yin K, Jensen LD, and Goldberg GS: Antibody and lectin target podoplanin to inhibit oral squamous carcinoma cell migration and viability by distinct mechanisms. *Oncotarget* 2015;6:9045–9060.
 63. Miyazaki A, Nakai H, Sonoda T, Hirohashi Y, Kaneko MK, Kato Y, Sawa Y, and Hiratsuka H: LpMab-23-recognizing cancer-type podoplanin is a novel predictor for a poor prognosis of early stage tongue cancer. *Oncotarget* 2018;9: 21156–21165.
 64. Ito A, Ohta M, Kato Y, Inada S, Kato T, Nakata S, Yatabe Y, Goto M, Kaneda N, Kurita K, Nakanishi H, and Yoshida K: A real-time near-infrared fluorescence imaging method for the detection of oral cancers in mice using an indocyanine green-labeled podoplanin antibody. *Technol Cancer Res Treat* 2018;17:1533033818767936.
 65. Retzbach EP, Sheehan SA, Nevel EM, Batra A, Phi T, Nguyen ATP, Kato Y, Baredes S, Fatahzadeh M, Shienbaum AJ, and Goldberg GS: Podoplanin emerges as a functionally relevant oral cancer biomarker and therapeutic target. *Oral Oncol* 2018;78:126–136.
 66. Landolfi JA, Gaffney PM, McManamon R, Gottdenker NL, Ellis AE, Rech RR, Han S, Lowenstine LJ, Agnew D, Garner MM, McAloose D, Hollinger C, St Leger J, Terrell SP, Duncan M, and Pessier AP: Reproductive tract neoplasia in adult female Asian elephants (*Elephas maximus*). *Vet Pathol* 2021;58:1131–1141.

Address correspondence to:

Yukinari Kato
Department of Molecular Pharmacology
Tohoku University Graduate School of Medicine
2-1, Seiryomachi, Aoba-ku
Sendai 980-8575
Japan

E-mail: yukinarikato@med.tohoku.ac.jp

Received: February 4, 2022

Accepted: July 3, 2022