

## COMMUNICATION

## Establishment of a high-affinity anti-mouse CXCR5 monoclonal antibody for flow cytometry

Kenichiro Ishikawa, Hiroyuki Suzuki<sup>ORCID</sup>, Tomohiro Tanaka, Mika K. Kaneko<sup>ORCID</sup>, and Yukinari Kato\*<sup>ORCID</sup>

Department of Antibody Drug Development, Tohoku University Graduate School of Medicine, 2-1, Seiryomachi, Aoba-ku, Sendai, Miyagi, Japan

### Abstract

The CXC chemokine receptor 5 (CXCR5) is a member of the G protein-coupled receptor family that is highly expressed in B cells and a subset of T cells, such as T follicular helper cells. Various types of cancers, including non-small cell lung cancer, breast cancer, and prostate cancer, also express CXCR5. Therefore, antibodies that specifically bind to CXCR5 could be useful for clarification of the mechanisms of cancer progression. In this study, we aimed to develop high-affinity monoclonal antibodies targeting mouse CXCR5 (mCXCR5) for flow cytometry. The established anti-mCXCR5 mAb (Cx<sub>5</sub>Mab-3; rat IgG<sub>2b</sub>, kappa), demonstrated reactivity with mCXCR5-overexpressed Chinese hamster ovary (CHO)-K1 (CHO/mCXCR5) in flow cytometry. Kinetic analyses using flow cytometry indicated that the dissociation constants ( $K_D$ ) of Cx<sub>5</sub>Mab-3 for CHO/mCXCR5 cell is  $7.2 \times 10^{-10}$  M. Furthermore, Cx<sub>5</sub>Mab-3 did not cross-react with other mouse CC, CXC, CX3C, and XC chemokine receptors. These results indicate that Cx<sub>5</sub>Mab-3 is useful for detecting mCXCR5 in flow cytometry with high affinity and specificity.

**Keywords:** Mouse CXC chemokine receptor 5; Monoclonal antibody; Peptide immunization; Flow cytometry

**\*Corresponding author:**

Yukinari Kato  
 (yukinari.kato.e6@tohoku.ac.jp)

**Citation:** Ishikawa K, Suzuki H, Tanaka T, Kaneko MK, Kato Y. Establishment of a high-affinity anti-mouse CXCR5 monoclonal antibody for flow cytometry. *Microbes & Immunity*. doi: 10.36922/mi.5664

**Received:** October 29, 2024

**Revised:** December 1, 2024

**Accepted:** December 10, 2024

**Published Online:** December 26, 2024

**Copyright:** © 2025 Author(s). This is an Open-Access article distributed under the terms of the Creative Commons Attribution License, permitting distribution, and reproduction in any medium, provided the original work is properly cited.

**Publisher's Note:** AccScience Publishing remains neutral with regard to jurisdictional claims in published maps and institutional affiliations.

### 1. Introduction

Chemokines are classified into four different subfamilies: CC, CXC, CX3C, and XC, which depend on the position and number of cysteine residues in their N-terminus.<sup>1-9</sup> The chemokine receptors belong to seven-transmembrane G-protein-coupled receptor families, and trigger intracellular signal transductions through binding to the ligands.<sup>1,8,10-19</sup> They play fundamental roles in development, homeostasis, immune system, cell proliferation, angiogenesis, and lymphocyte differentiation.<sup>20-39</sup>

The CXC chemokine receptor Type 5 (CXCR5) is predominantly expressed on the surface of B cells and a subset of T cells, such as T follicular helper (Tfh) cells.<sup>40</sup> The CXCR5+ Tfh cells interact with germinal center B cells to promote their differentiation into plasma cells or memory B cells formation through somatic hypermutation and class-switch.<sup>41</sup> Therefore, CXCR5+ Tfh cells play an important role in secondary lymphoid tissue orchestration and lymphoid neogenesis in the spleen, lymph nodes, and Peyer's patches.<sup>8,40</sup> CXCL13 is one of the ligands of CXCR5.<sup>42</sup> The CXCL13/CXCR5 axis activates downstream signaling, including PI3K/Akt, MEK/ERK, and Rac

pathways, which modulates immune cells to promote lymphocyte infiltration, activation, and differentiation, thereby enhancing the antitumor immune response.<sup>42</sup> Furthermore, CXCR5 is also expressed in cancer cells, which makes pivotal contributions to the development and progression.<sup>8,43-47</sup> Therefore, monoclonal antibodies (mAbs), which specifically target CXCR5 would be useful for cancer therapy and elucidation of the disease progression.

The Cell-Based Immunization and Screening (CBIS) method includes the immunization of antigen-overexpressed cells and high-throughput hybridoma screening using flow cytometry. We have developed specific mAbs against mouse CCR1 (mCCR1; clone C<sub>1</sub>Mab-6),<sup>48</sup> mouse CCR3 (mCCR3; clone C<sub>3</sub>Mab-3),<sup>49</sup> mouse CCR5 (mCCR5; clone C<sub>5</sub>Mab-2),<sup>50</sup> mouse CCR8 (mCCR8; clone C<sub>8</sub>Mab-2),<sup>51</sup> mouse CXCR1 (mCXCR1; clone C<sub>x1</sub>Mab-1),<sup>52</sup> mouse CXCR3 (mCXCR3; clone C<sub>x3</sub>Mab-4),<sup>48</sup> and mouse CXCR4 (mCXCR4; clone C<sub>x4</sub>Mab-1)<sup>48</sup> using the CBIS method. Furthermore, we established specific mAbs against mouse CCR2 (mCCR2; clone C<sub>2</sub>Mab-6),<sup>53</sup> mCCR3 (clones C<sub>3</sub>Mab-6 and C<sub>3</sub>Mab-7),<sup>54</sup> mouse CCR4 (mCCR4; clone C<sub>4</sub>Mab-1),<sup>55</sup> mouse CCR6 (mCCR6; clone C<sub>6</sub>Mab-13),<sup>56</sup> mouse CCR9 (mCCR9; clone C<sub>9</sub>Mab-24),<sup>57</sup> and mouse CXCR6 (mCXCR6; clone C<sub>x6</sub>Mab-1)<sup>58</sup> using the N-terminal peptide immunization. In this paper, we report the successful development of a novel anti-mouse CXCR5 (mCXCR5) mAb using the N-terminal peptide immunization method.

## 2. Materials and methods

### 2.1. Plasmids, peptides, and cell lines

The synthesized DNA encoding mCXCR5 (Accession No.: NM\_007551.3), mouse XCR1 (mXCR1; Accession No.: NM\_011798), and mouse CX3CR1 (mCX3CR1, Accession No.: BC012653.1) were purchased from Eurofins Genomics KK (Tokyo, Japan). The complementary DNAs (cDNAs) of mouse CCR10 (mCCR10; Accession No.: NM\_007721.4; Catalog No.: MR224922), and mouse CXCR2 (mCXCR2; Accession No.: NM\_009909.3; Catalog No.: MR227587) were purchased from OriGene Technologies, Inc. (Rockville, MD, USA). The mCXCR5, mXCR1, and mCX3CR1 cDNAs were cloned into the pCAGzeo vector (FUJIFILM Wako Pure Chemical Corporation, Osaka, Japan). The mCCR10 cDNA was cloned into a pCAGzeo\_ssnPA16 vector. The mCXCR2 cDNA was cloned into a pCMV6neo vector.

A partial sequence of the N-terminal extracellular region of mCXCR5 (<sub>1</sub>-MNYPLTLDMGSITYNMDL<sub>-19</sub>), with a C-terminal cysteine was obtained from Eurofins Genomics KK (Tokyo, Japan). Furthermore, the keyhole

limpet hemocyanin (KLH) was conjugated at the C-terminus of the peptide.

Cell lines, including P3X63Ag8U.1 (P3U1), Chinese hamster ovary (CHO)-K1, and LN229 were purchased from the American Type Culture Collection (Manassas, VA, USA). CHO-K1, P3U1, and each chemokine receptor-expressed CHO-K1 were cultured in a Roswell Park Memorial Institute (RPMI)-1640 medium (Nacalai Tesque, Inc., Kyoto, Japan), supplemented with 10% heat-inactivated fetal bovine serum (FBS, Thermo Fisher Scientific Inc., Waltham, MA, USA), 100 units/mL penicillin, 100 µg/mL streptomycin, and 0.25 µg/mL amphotericin B (Nacalai Tesque, Inc., Kyoto, Japan). LN229 and LN229 cells expressed mCXCR5 (LN229/mCXCR5) were cultured in a Dulbecco's Modified Eagle Medium (Nacalai Tesque, Inc., Kyoto, Japan), supplemented with 10% heat-inactivated FBS (Thermo Fisher Scientific Inc., Waltham, MA, USA), 100 units/mL penicillin, 100 µg/mL streptomycin, and 0.25 µg/mL amphotericin B (Nacalai Tesque, Inc., Kyoto, Japan).

### 2.2. Animals

A 5-week-old female Sprague-Dawley rat was purchased from CLEA Japan (Tokyo, Japan). There is no influence of sex on the results of the study. The animal was housed under specific pathogen-free conditions. All animal experiments were performed according to the National Institutes of Health guide for the care and use of Laboratory animals (NIH Publications No. 8023, revised 1978) and approved by the Animal Care and Use Committee of Tohoku University (Permit number: 2022Mda-001).

### 2.3. Development of transfectants

The plasmids were transfected into LN229 and CHO-K1 cells using the Neon transfection system (Thermo Fisher Scientific Inc., Waltham, MA, USA). Stable transfectants were established by staining with the following mAbs: anti-mCXCR5 mAb (clone L138D7; BioLegend, San Diego, CA, USA), anti-PA tag mAb (clone NZ-1 for mCCR10), anti-mCXCR2 mAb (clone SA045E1; BioLegend, San Diego, CA, USA), anti-mXCR1 mAb (clone ZET; BioLegend, San Diego, CA, USA), and anti-mCX3CR1 mAb (clone SA011F11; BioLegend, San Diego, CA, USA). The cells were sorted using a cell sorter (SH800; Sony Corp., Tokyo, Japan). After sorting, the cells were cultured in medium supplemented with 0.5 mg/mL of Zeocin (InvivoGen, San Diego, CA, USA) or 0.5 mg/ml of G418 (Nacalai Tesque, Inc., Kyoto, Japan). These chemokine receptors-overexpressed CHO-K1 or LN229 (e.g., CHO/mCXCR5) clones were successfully established.<sup>58</sup>

Stable transfectants of the following chemokine receptors were previously established: CHO/mCCR1,<sup>48</sup>

CHO/mCCR2,<sup>53</sup> CHO/mCCR3,<sup>49</sup> CHO/PA-mCCR4,<sup>55</sup> CHO/mCCR5,<sup>50</sup> CHO/PA-mCCR6,<sup>56</sup> CHO/mCCR7,<sup>59</sup> CHO/mCCR8,<sup>51</sup> CHO/mCCR9,<sup>57</sup> CHO/mCXCR1,<sup>52</sup> CHO/mCXCR3,<sup>48</sup> CHO/mCXCR4,<sup>48</sup> and CHO/mCXCR6.<sup>58</sup>

These transfectants were detected by the following mAbs: anti-CCR1 mAb (clone S15040E; BioLegend, San Diego, CA, USA), anti-CCR2 mAb (clone EPR20844; Abcam, Cambridge, MA, USA), anti-CCR3 mAb (clone J073E5; BioLegend, San Diego, CA, USA), anti-CCR5 mAb (clone C<sub>5</sub>Mab-2<sup>50</sup>), anti-CCR7 mAb (clone 4B12; BioLegend, San Diego, CA, USA), anti-CCR8 mAb (clone C<sub>8</sub>Mab-2<sup>51</sup>), anti-CCR9 mAb (clone CW-1.2; BioLegend, San Diego, CA, USA), anti-CXCR1 mAb (clone 1122A; R&D Systems Inc., Minneapolis, MN, USA), anti-CXCR2 mAb, anti-CXCR3 mAb (clone CXCR3-173; BioLegend, San Diego, CA, USA), anti-CXCR4 mAb (clone L276F12; BioLegend, San Diego, CA, USA), anti-CXCR6 mAb (clone SA051D1; BioLegend, San Diego, CA, USA), anti-XCR1 mAb, anti-CX3CR1 mAb, and NZ-1.

#### 2.4. Development of mCXCR5-producing hybridomas

A rat was immunized intraperitoneally with 100 µg of KLH-conjugated mCXCR5 peptide (mCXCR5-KLH) with Alhydrogel adjuvant 2% (InvivoGen, San Diego, CA, USA). The procedure included three additional weekly injections (100 µg/rat), followed by a final booster dose (100 µg/rat) 2 days before harvesting spleen cells. The harvested spleen cells were subsequently fused with P3U1 cells, using PEG1500 (Roche Diagnostics, Indianapolis, IN, USA). The resulting hybridomas were grown in RPMI medium supplemented with 10% FBS, 100 units/mL of penicillin, 100 µg/mL of streptomycin, and 0.25 µg/mL of amphotericin B. For hybridoma selection, hypoxanthine, aminopterin, and thymidine (Thermo Fisher Scientific Inc., Waltham, MA, USA) were added to the medium.<sup>58</sup> The supernatants were subsequently screened using enzyme-linked immunosorbent assay (ELISA) with the mCXCR5 peptide, followed by flow cytometry using CHO/mCXCR5 and CHO-K1 cells.

#### 2.5. ELISA

The synthesized peptide (MNYPLTLDMGSITYNMDDL) was immobilized onto immunoplates. After blocking with 1% bovine serum albumin (BSA)-containing 0.05% Tween20 (PBST; Nacalai Tesque, Inc., Kyoto, Japan), the immunoplates were incubated with the hybridoma supernatants, followed by peroxidase-conjugated anti-rat immunoglobulins (1:20000 dilution; Sigma-Aldrich Corp., St. Louis, MO, USA). The enzymatic reactions were determined by measuring the

optical density at 655 nm using the ELISA POD Substrate TMB Kit (Nacalai Tesque, Inc., Kyoto, Japan).

#### 2.6. Flow cytometry analysis

Cells were washed with PBS containing 0.1% BSA (blocking buffer) and treated with 10, 1, 0.1, or 0.01 µg/mL of Cx<sub>5</sub>Mab-3 or L138D7 for 30 min at 4°C. For the peptide inhibition assay, Cx<sub>5</sub>Mab-3 (0.1 µg/mL) or L138D7 (0.1 µg/mL) were pre-incubated with 1 µg/mL of mCXCR5 peptide or dimethyl sulfoxide for 30 min at 4°C, and further incubated with CHO/mCXCR5 for 30 min at 4°C. The cells were then treated with anti-rat immunoglobulin G (IgG) conjugated with Alexa Fluor 488 (Cell Signaling Technology, Inc., Danvers, MA, USA). Anti-mouse IgG conjugated with Alexa Fluor 488 and anti-rabbit IgG conjugated with Alexa Fluor 488 (Cell Signaling Technology, Inc., Danvers, MA, USA) were also used to detect the primary mAbs. The fluorescence data were collected using the SA3800 Cell Analyzer (Sony Corp., Tokyo, Japan). Cells were gated on the dot plot (SSC vs. FSC), and the fluorescence intensity was analyzed using FlowJo software (BD Biosciences, Franklin Lakes, NJ, USA).

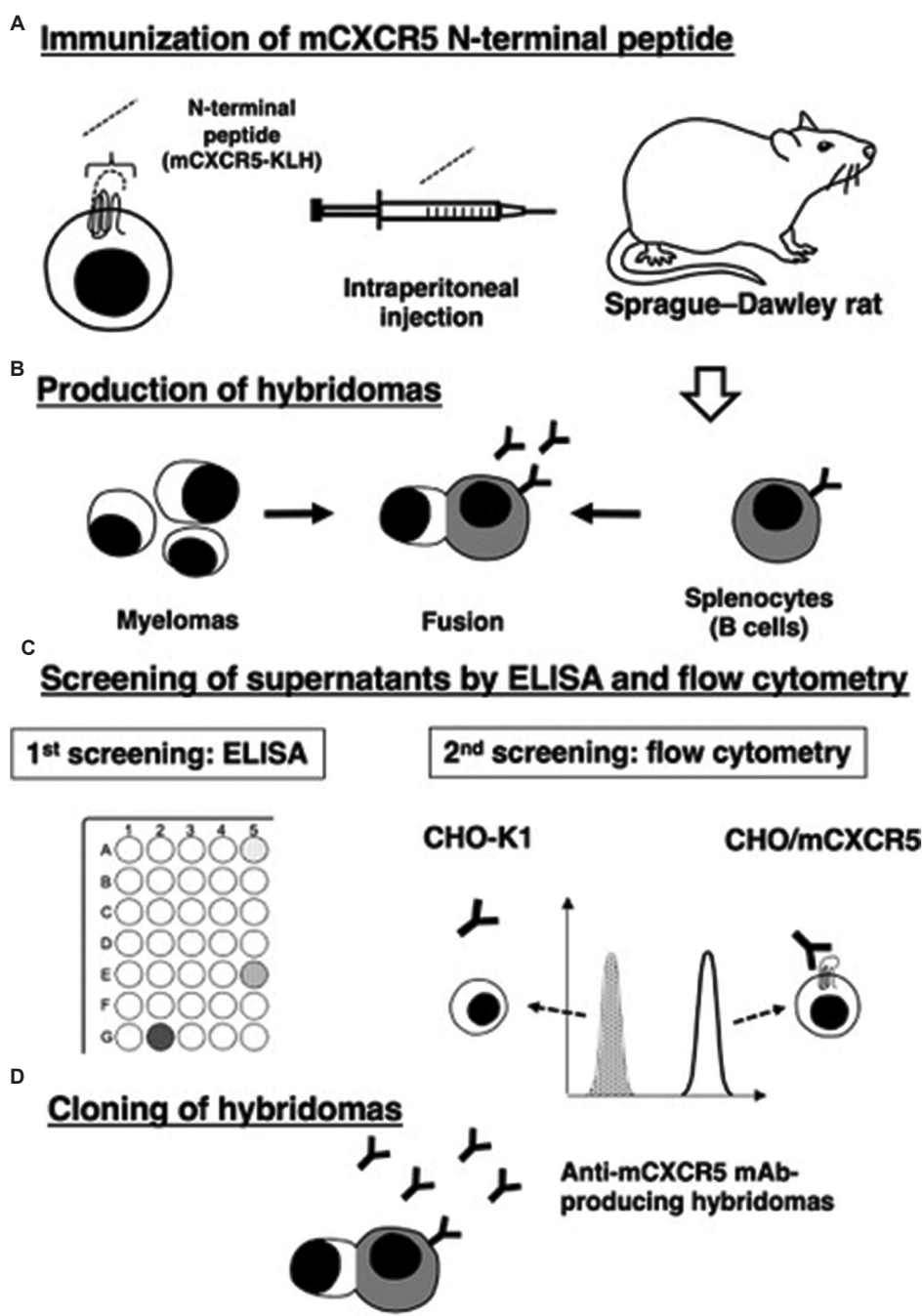
#### 2.7. Determination of dissociation constant ( $K_D$ ) by flow cytometry

The  $K_D$  was determined by fitting saturation binding curves to the built-in one-site binding models in GraphPad PRISM 6 (GraphPad Software, Inc., La Jolla, CA, USA). This analysis was performed after the flow cytometry analysis of CHO/mCXCR5 cells treated with serially diluted Cx<sub>5</sub>Mab-3 or L138D7, followed by the incubation with anti-rat IgG conjugated with Alexa Fluor 488 (1:200 dilution).

### 3. Results

#### 3.1. Development of anti-mCXCR5 mAbs using N-terminal peptide immunization

To develop anti-mCXCR5 mAbs, one rat was immunized with the KLH-conjugated mCXCR5 peptide (Figure 1A). Splenocytes from the immunized rat were fused with myeloma P3U1 cells (Figure 1B). Positive wells for the naked mCXCR5 peptide were identified using ELISA; further selection was conducted using flow cytometry to identify supernatants that were reactive to CHO/mCXCR5 cells but non-reactive to CHO-K1 cells (Figure 1C). The ELISA assay identified 74 out of 1342 wells (5.5%), which strongly reacted with the naked mCXCR5 peptide. The flow cytometry analyses identified 18 out of the 74 wells (24.3%), which exhibited strong reactivity to CHO/mCXCR5 cells while showing no reactivity to CHO-K1 cells. After the limiting dilution and several additional



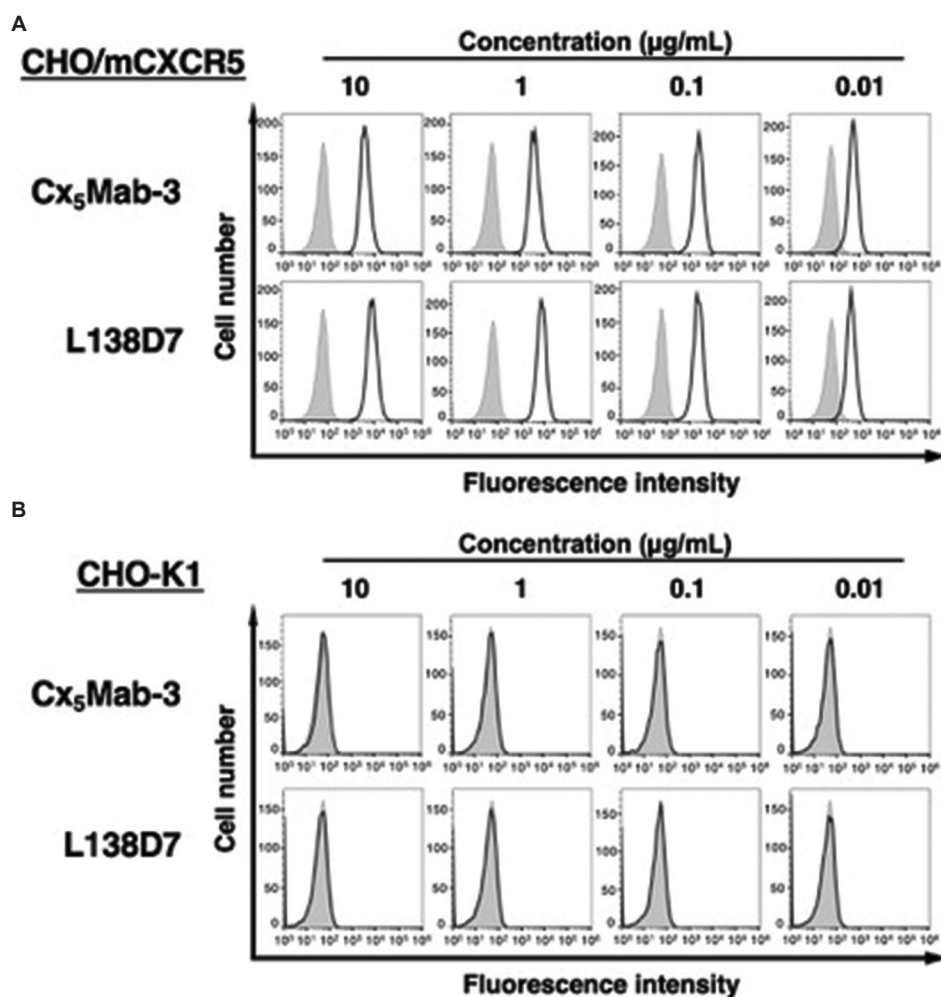
**Figure 1.** The development of anti-mCXCR5 mAbs. (A) Sprague-Dawley rats were immunized with CHO/mCXCR5 cells. (B) The splenocytes were fused with P3U1 myeloma cells. (C) Hybridomas producing anti-mCXCR5 mAb were screened using ELISA (first screening) and flow cytometry with CHO-K1 and CHO/mCXCR5 cells (second screening). (D) After limiting dilution, the anti-mCXCR5 mAb (Cx<sub>5</sub>Mab-3) was successfully established. Abbreviations: KLH: Keyhole limpet hemocyanin; CHO-K1: Chinese hamster ovary (CHO)-K1; ELISA: Enzyme-linked immunosorbent assay.

screenings, anti-mCXCR5 mAb (Cx<sub>5</sub>Mab-3; rat IgG<sub>2b</sub>, kappa) was successfully established (Figure 1D).

**3.2. Flow cytometry analysis using Cx<sub>5</sub>Mab-3**

To assess the reactivity of Cx<sub>5</sub>Mab-3 and L138D7, we conducted flow cytometry analysis on CHO/mCXCR5 and

CHO-K1 cells. Cx<sub>5</sub>Mab-3 recognized CHO/mCXCR5 cells in a dose-dependent manner at 10, 1, 0.1, and 0.01 µg/mL (Figure 2A). Parental CHO-K1 cells were not recognized even at 10 µg/mL of any mAbs (Figure 2B). The reactivity of Cx<sub>5</sub>Mab-3 was also observed in LN229/mCXCR5 cells (Figure 3). The sensitivity against CHO/mCXCR5 or



**Figure 2.** Flow cytometry analysis of mCXCR5-expressing cells using Cx<sub>5</sub>Mab-3 and L138D7. CHO/mCXCR5 (A) and CHO-K1 (B) cells were treated with 0.01 – 10 µg/mL of Cx<sub>5</sub>Mab-3 (black line), L138D7 (black line), or control blocking buffer (filled gray). Then, cells were treated with anti-rat IgG conjugated with Alexa Fluor 488. Fluorescence data were collected using the SA3800 Cell Analyzer.

Abbreviations: CHO-K1: Chinese hamster ovary (CHO)-K1; IgG: Immunoglobulin G.

LN229/mCXCR5 cells was similar for both Cx<sub>5</sub>Mab-3 and L138D7 antibodies (Figures 2 and 3).

We next performed a peptide-blocking assay. As shown in Figure 4, both Cx<sub>5</sub>Mab-3 and L138D7 reacted with CHO/mCXCR5 cells. The reactivity of Cx<sub>5</sub>Mab-3 was completely neutralized by the mCXCR5 peptide, indicating that its reaction was mediated by recognition of the N-terminus of mCXCR5. In contrast, the reactivity of L138D7 was not neutralized, suggesting that the epitope recognized by L138D7 differs from that recognized by Cx<sub>5</sub>Mab-3.

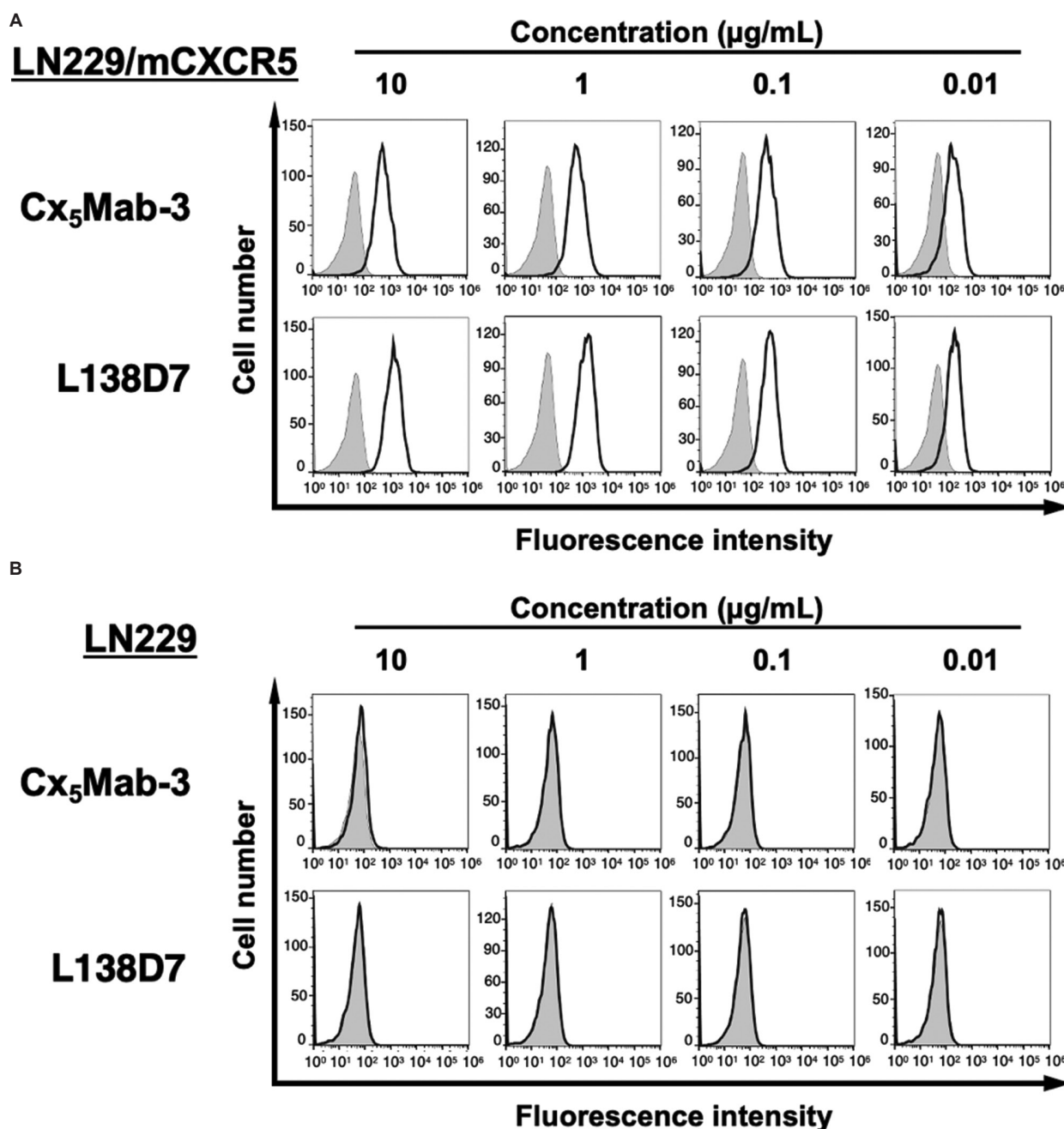
### 3.3. Determination of dissociation constant of anti-mCXCR<sub>5</sub> mAbs against CHO/mCXCR5 cells

We determined the apparent dissociation constant ( $K_D$ ) of Cx<sub>5</sub>Mab-3 and L138D7 against mCXCR5 by flow cytometry.

The geometric mean fluorescence intensity of CHO/mCXCR5 at each concentration of Cx<sub>5</sub>Mab-3 and L138D7 was plotted. By fitting one-site binding models, the  $K_D$  values of Cx<sub>5</sub>Mab-3 and L138D7 for CHO/mCXCR5 were determined as  $7.2 \times 10^{-10}$  M and  $7.0 \times 10^{-9}$  M (Figure 5), respectively, indicating that Cx<sub>5</sub>Mab-3 possesses a higher affinity than L138D7 for CHO/mCXCR5 cells.

### 3.4. Reactivity of Cx<sub>5</sub>Mab-3 to CC, CXC, CX3C, and XC chemokine receptor-expressed CHO-K1 cells

We have established anti-mouse CC, CXC, CX3C, and XC chemokine receptor mAbs and evaluated them using these receptors-expressed CHO-K1 cells, as described in the materials and methods. Using these eighteen cell lines, the specificity of Cx<sub>5</sub>Mab-3 was investigated. As shown in Figure 6A, Cx<sub>5</sub>Mab-3 recognized only CHO/mCXCR5, but



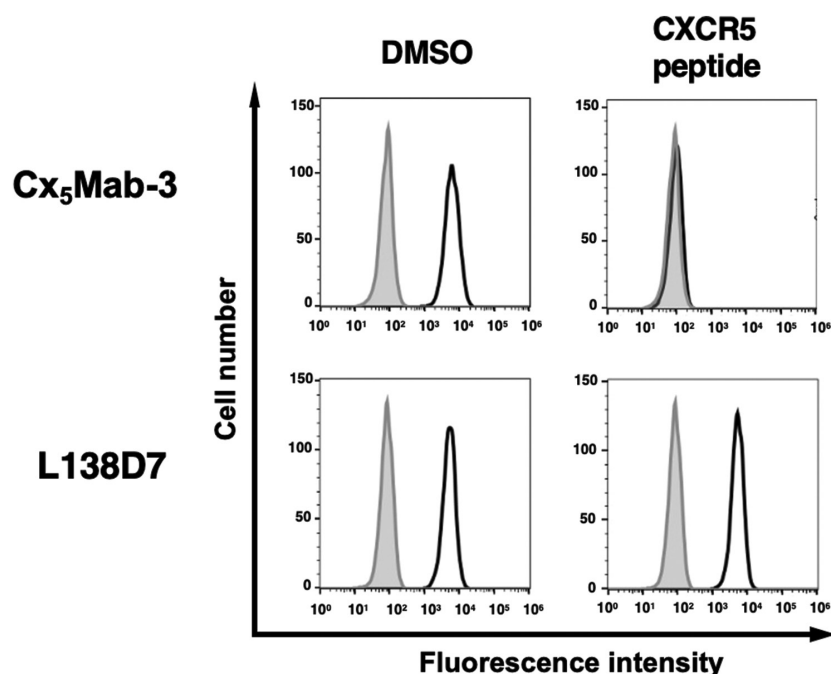
**Figure 3.** Flow cytometry analysis of mCXCR5-expressing LN229 cells using Cx<sub>5</sub>Mab-3 and L138D7. LN229/mCXCR5 (A) and LN229 (B) cells were treated with 0.01 – 10  $\mu\text{g/mL}$  of Cx<sub>5</sub>Mab-3 (black line), L138D7 (black line), or control blocking buffer (filled gray). Then, cells were treated with anti-rat IgG conjugated with Alexa Fluor 488. Fluorescence data were collected using the SA3800 Cell Analyzer. Abbreviation: IgG: Immunoglobulin G.

not others. We confirmed the expression of each receptor (Figure 6B).

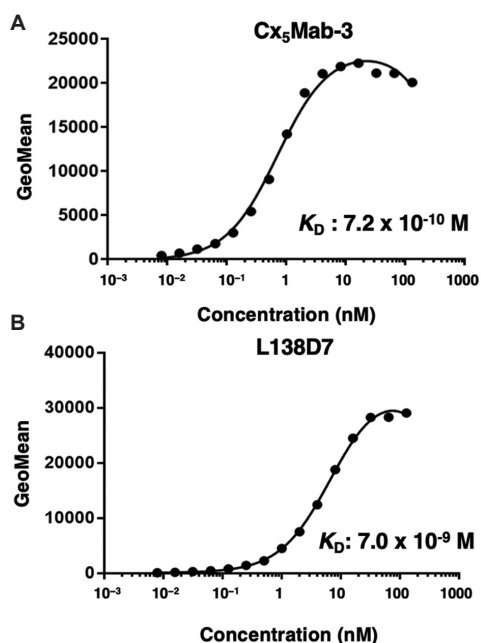
#### 4. Discussion

In this study, we developed a novel anti-mCXCR5 mAb (clone Cx<sub>5</sub>Mab-3) using N-terminal peptide immunization

and investigated its application in flow cytometry to detect mCXCR5 (Figures 2-5). We confirmed the specificity of Cx<sub>5</sub>Mab-3 among eighteen CC, CXC, CX3C, and XC chemokine receptors (Figure 6). Therefore, Cx<sub>5</sub>Mab-3 can recognize mCXCR5-expressing cells with high specificity in *in vivo* experiments. We assessed the reactivity of



**Figure 4.** Peptide-blocking assay of Cx<sub>5</sub>Mab-3 and L138D7 with mCXCR5 peptide. CHO/mCXCR5 cells were incubated with Cx<sub>5</sub>Mab-3 (0.1 µg/mL) plus control (1% DMSO in blocking buffer), Cx<sub>5</sub>Mab-3 plus mCCR5 peptide (1 µg/mL), L138D7 (0.1 µg/mL) plus control (1% DMSO in blocking buffer), or L138D7 plus mCCR5 peptide (1 µg/mL) for 30 min at 4°C. Cells were then treated with Alexa Fluor 488-conjugated anti-rat IgG. Fluorescence data were collected using the SA3800 Cell Analyzer. The filled gray represents the negative control (blocking buffer). Abbreviations: DMSO: Dimethyl sulfoxide; IgG: Immunoglobulin G.

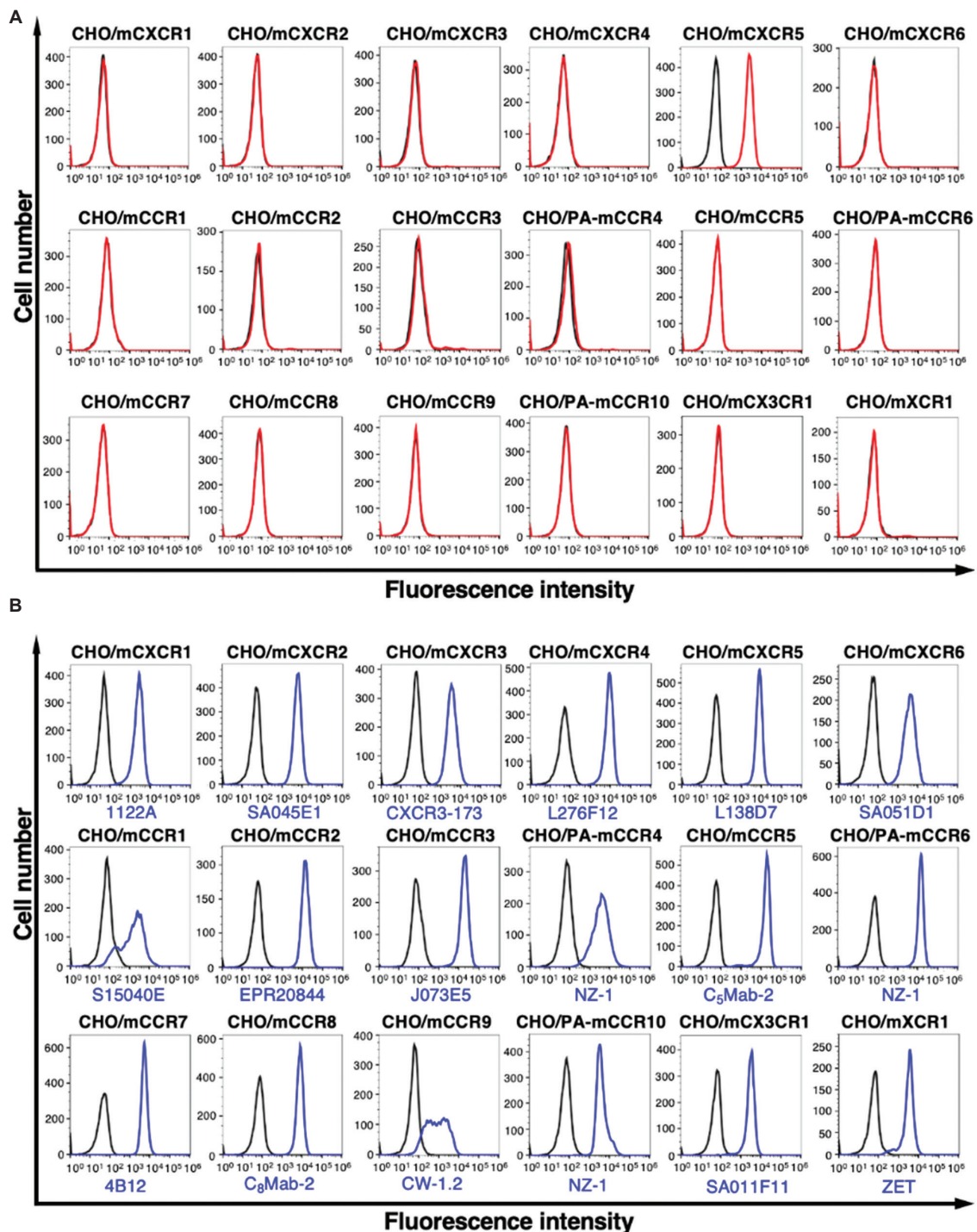


**Figure 5.** Binding affinity of Cx<sub>5</sub>Mab-3 and L138D7. CHO/mCXCR5 cells were suspended in serially diluted concentrations of Cx<sub>5</sub>Mab-3 (A) or L138D7 (B). The cells were treated with anti-rat IgG conjugated with Alexa Fluor 488. The fluorescence data were subsequently collected using the SA3800 Cell Analyzer, followed by the calculation of the K<sub>D</sub> using GraphPad PRISM 6.

Abbreviation: IgG: Immunoglobulin G.

Cx<sub>5</sub>Mab-3 in western blotting; however, the mCXCR5 protein was not detected by Cx<sub>5</sub>Mab-3 (data not shown), although Cx<sub>5</sub>Mab-3 detects N-terminal peptide of mCXCR5 in ELISA (Figure 1). This discrepancy suggests that both the cell surface-expressed N-terminal region of CXCR5 and the N-terminal peptide may form specific conformations, which are disrupted by SDS sample buffer in western blotting. A commercially available anti-mCXCR5 mAb (clone L138D7) was developed by immunizing rats with mCXCR5-transfected cells and is useful only for flow cytometry.<sup>60</sup> Since the reaction of L138D7 was not neutralized by the N-terminal peptide (Figure 4), its epitope may be located in other extracellular domains. In the future study, we aim to determine the binding epitope of L138D7.

It has been reported that the development of therapeutic drugs targeting the CXCL13/CXCR5 axis can be effective for treating cancers and inflammatory diseases.<sup>61</sup> CXCR5+ CD4+ Tfh cells mainly contribute to the antibody/B cell receptor class-switching, antibody production, and B cell proliferation during infection, autoimmunity, and cancer.<sup>62</sup> Moreover, CXCR5+ CD8+ T cells not only possess these functions but also maintain cytolytic activity similar to CD8+ T effector cells within tumor microenvironments.<sup>63-65</sup> CXCR5 expression is an important marker of progenitor memory stem-like



**Figure 6.** Flow cytometry analysis of Cx<sub>5</sub>Mab-3 in CC, CXC, CX3C, and XC chemokine receptor-expressed CHO-K1 cells. (A) The eighteen CC, CXC, CX3C, and XC chemokine receptor-expressed CHO-K1 cells were treated with 1 µg/mL of Cx<sub>5</sub>Mab-3 (red line) or control blocking buffer (black line), followed by the treatment with anti-rat IgG conjugated with Alexa Fluor 488. (B) The cells were treated with 1 µg/mL of corresponding mAbs, including anti-CXCR1 mAb (clone 1122A), anti-CXCR2 mAb (clone SA045E1), anti-CXCR3 mAb (clone CXCR3-173), anti-CXCR4 mAb (clone L276F12), anti-CXCR5 mAb (clone L138D7), anti-CXCR6 mAb (clone SA051D1), anti-CCR1 mAb (clone S15040E), anti-CCR2 mAb (clone EPR20844), anti-CCR3 mAb (clone J073E5), anti-CCR5 mAb (clone C<sub>5</sub>Mab-2<sup>50</sup>), anti-CCR7 mAb (clone 4B12), anti-CCR8 mAb (clone C<sub>8</sub>Mab-2<sup>51</sup>), anti-CCR9 mAb (clone CW-1.2), anti-XCR1 mAb (clone ZET), anti-CX3CR1 (clone SA011F11) mAb, or anti-PA tag mAb (clone NZ-1) (blue line). Then, cells were treated with corresponding secondary antibody conjugated with Alexa Fluor 488. Fluorescence data were collected using the SA3800 Cell Analyzer. Abbreviation: IgG: Immunoglobulin G.



exhausted CD8+ T cells, which can respond to immune checkpoint inhibitor therapy in tumors.<sup>66</sup> Furthermore, CD8+ T cells with high PD-1 expression in tumors secrete high levels of CXCL13.<sup>67</sup> This CXCL13 secretion attracts Tfh cells and B cells to the tumor microenvironment.<sup>67</sup> As a result, CXCL13 can predict the response to immune checkpoint inhibitor therapy that correlates with durable responses and increased overall survival.<sup>67</sup> Therefore, CXCL13 and CXCR5 are novel biomarkers for predicting responses to immune checkpoint inhibitor therapy.<sup>68</sup>

In human breast cancer cell lines, an inverse correlation between the p53 tumor suppressor and CXCR5 expression has been reported.<sup>69</sup> Silencing p53 in MCF7 cells increases CXCR5 expression, which potentiates CXCL13-mediated chemotaxis.<sup>69</sup> A CXCR5 promoter analysis revealed that p53 suppresses the transcriptional activity of NF- $\kappa$ B, which is important for the upregulation of CXCR5.<sup>69</sup> Similarly, related tumor suppressors p63 and p73 regulate CXCR5 through comparable mechanisms.<sup>70</sup> Since CXCL13 is one of the overexpressed chemokines in breast cancer tissues compared with normal breast tissues, mAb therapies targeting CXCR5 could be an important strategy in treating tumors.<sup>70</sup> We previously modified the isotype of mAbs to mouse IgG<sub>2a</sub> to enable antibody-dependent cellular cytotoxicity (ADCC) and evaluated their antitumor activities in mouse xenograft models.<sup>71-73</sup> Since the isotype of Cx<sub>5</sub>Mab-3 is rat IgG<sub>2b</sub>, an isotype switch to mouse IgG<sub>2a</sub> will be required in future studies.

The CXCL13/CXCR5 axis is involved in the progression of autoimmune and inflammatory diseases.<sup>65</sup> In inflammatory bowel disease (IBD), CXCL13 levels are elevated in both humans and mouse models.<sup>74</sup> In IBD patients, serum CXCL13 concentrations are significantly higher than that in healthy controls.<sup>74</sup> Similarly, in a mouse model of dextran sodium sulfate-induced colitis, elevated CXCL13 levels were observed in the colon. The CXCL13 deficiency inhibits the occurrence and development of the colitis and restricts CD4+CXCR5+ T cells migration to mesenteric lymph nodes, resulting in an increase of regulatory B cells in the colon.<sup>74</sup> Therefore, antagonizing the CXCL13/CXCR5 axis may work as a potential therapeutic strategy for patients with IBD. Cx<sub>5</sub>Mab-3 could contribute to the preclinical study through antagonizing the CXCL13/CXCR5 axis or depleting CXCR5+ T cells. As such, Cx<sub>5</sub>Mab-3 may be useful for establishing proof of concept in preclinical studies.<sup>71-73</sup>

## 5. Conclusion

Cx<sub>5</sub>Mab-3 is useful for detecting mCXCR5 by flow cytometry with high affinity and may be useful for establishing proof of concept in preclinical studies.

## Acknowledgments

None.

## Funding

This research was supported in part by Japan Agency for Medical Research and Development (AMED) under Grant Numbers: JP24am0521010 (to Y.K.), JP24ama121008 (to Y.K.), JP24ama221339 (to Y.K.), JP23am0401013 (to Y.K.), JP24bm1123027 (to Y.K.), and JP24ck0106730 (to Y.K.), and by the Japan Society for the Promotion of Science (JSPS) Grants-in-Aid for Scientific Research (KAKENHI) grant nos. 22K06995 (to H.S.) and 22K07224 (to Y.K.).

## Conflict of interest

The authors declare that they have no competing interests.

## Author contributions

*Conceptualization:* Mika K. Kaneko, Yukinari Kato

*Formal analysis:* Kenichiro Ishikawa

*Investigation:* Kenichiro Ishikawa, Hiroyuki Suzuki, Tomohiro Tanaka

*Methodology:* Mika K. Kaneko

*Writing—original draft:* Kenichiro Ishikawa

*Writing—review & editing:* Hiroyuki Suzuki, Yukinari Kato

## Ethics approval and consent to participate

All animal experiments were approved by the Animal Care and Use Committee of Tohoku University (Permit number: 2022MdA-001).

## Consent for publication

Not applicable.

## Availability of data

The data presented in this study are available in the article.

## Further disclosure

The paper has been uploaded to a preprint server (doi: 10.20944/preprints202410.0497.v1).

## References

1. Nelson PJ, Krensky AM. Chemokines, chemokine receptors, and allograft rejection. *Immunity*. 2001;14(4):377-386. doi: 10.1016/s1074-7613(01)00118-2
2. Lukacs-Kornek V, Engel D, Tacke F, Kurts C. The role of chemokines and their receptors in dendritic cell biology. *Front Biosci*. 2008;13:2238-2252. doi: 10.2741/2838
3. Bonecchi R, Galliera E, Borroni EM, *et al*. Chemokines and

- chemokine receptors: An overview. *Front Biosci (Landmark Ed)*. 2009;14(2):540-551.  
doi: 10.2741/3261
4. Comerford I, McColl SR. Mini-review series: Focus on chemokines. *Immunol Cell Biol*. 2011;89(2):183-184.  
doi: 10.1038/icb.2010.164
  5. Salanga CL, Handel TM. Chemokine oligomerization and interactions with receptors and glycosaminoglycans: The role of structural dynamics in function. *Exp Cell Res*. 2011;317(5):590-601.  
doi: 10.1016/j.yexcr.2011.01.004
  6. Zlotnik A, Yoshie O. The chemokine superfamily revisited. *Immunity*. 2012;36(5):705-716.  
doi: 10.1016/j.immuni.2012.05.008
  7. Marchese A. Endocytic trafficking of chemokine receptors. *Curr Opin Cell Biol*. 2014;27:72-77.  
doi: 10.1016/j.ceb.2013.11.011
  8. Hughes CE, Nibbs RJB. A guide to chemokines and their receptors. *Febs J*. 2018;285(16):2944-2971.  
doi: 10.1111/febs.14466
  9. Ortiz Zacarías NV, Lenselink EB, IJzerman AP, Handel TM, Heitman LH. Intracellular Receptor modulation: Novel approach to target GPCRs. *Trends Pharmacol Sci*. 2018;39(6):547-559.  
doi: 10.1016/j.tips.2018.03.002
  10. Aragay AM, Ruiz-Gómez A, Penela P, et al. G protein-coupled receptor kinase 2 (GRK2): Mechanisms of regulation and physiological functions. *FEBS Lett*. 1998;430(1-2):37-40.  
doi: 10.1016/s0014-5793(98)00495-5
  11. Katritch V, Cherezov V, Stevens RC. Diversity and modularity of G protein-coupled receptor structures. *Trends Pharmacol Sci*. 2012;33(1):17-27.  
doi: 10.1016/j.tips.2011.09.003
  12. Krumm BE, Grisshammer R. Peptide ligand recognition by G protein-coupled receptors. *Front Pharmacol*. 2015;6:48.  
doi: 10.3389/fphar.2015.00048
  13. Kufareva I, Salanga CL, Handel TM. Chemokine and chemokine receptor structure and interactions: Implications for therapeutic strategies. *Immunol Cell Biol*. 2015;93(4):372-383.  
doi: 10.1038/icb.2015.15
  14. Proudfoot AE, Ugucioni M. Modulation of chemokine responses: Synergy and cooperativity. *Front Immunol*. 2016;7:183.  
doi: 10.3389/fimmu.2016.00183
  15. Miller MC, Mayo KH. Chemokines from a structural perspective. *Int J Mol Sci*. 2017;18(10):2088.  
doi: 10.3390/ijms18102088
  16. Gustavsson M. New insights into the structure and function of chemokine receptor: chemokine complexes from an experimental perspective. *J Leukoc Biol*. 2020;107(6):1115-1122.  
doi: 10.1002/jlb.2mr1219-288r
  17. Laganà M, Schlecht-Louf G, Bachelier F. The G Protein-coupled receptor kinases (GRKs) in chemokine receptor-mediated immune cell migration: From molecular cues to physiopathology. *Cells*. 2021;10(1):75.  
doi: 10.3390/cells10010075
  18. Shpakov AO. Allosteric regulation of G-protein-coupled receptors: From diversity of molecular mechanisms to multiple allosteric sites and their ligands. *Int J Mol Sci*. 2023;24(7):6187.  
doi: 10.3390/ijms24076187
  19. Thompson MD, Reiner-Link D, Berghella A, et al. G protein-coupled receptor (GPCR) pharmacogenomics. *Crit Rev Clin Lab Sci*. 2024;61(8):641-684.  
doi: 10.1080/10408363.2024.2358304
  20. Conroy DM, Humbles AA, Rankin SM, et al. The role of the eosinophil-selective chemokine, eotaxin, in allergic and non-allergic airways inflammation. *Mem Inst Oswaldo Cruz*. 1997;92(Suppl 2):183-191.  
doi: 10.1590/s0074-02761997000800024
  21. Ward SG, Westwick J. Chemokines: Understanding their role in T-lymphocyte biology. *Biochem J*. 1998;333(Pt 3):457-470.  
doi: 10.1042/bj3330457
  22. Traynor TR, Huffnagle GB. Role of chemokines in fungal infections. *Med Mycol*. 2001;39(1):41-50.  
doi: 10.1080/mmy.39.1.41.50
  23. Chensue SW. Molecular machinations: Chemokine signals in host-pathogen interactions. *Clin Microbiol Rev*. 2001;14(4):821-835.  
doi: 10.1128/cmr.14.4.821-835.2001
  24. Ransohoff RM. Chemokines and chemokine receptors: Standing at the crossroads of immunobiology and neurobiology. *Immunity*. 2009;31(5):711-721.  
doi: 10.1016/j.immuni.2009.09.010
  25. Wang X, Sharp JS, Handel TM, Prestegard JH. Chemokine oligomerization in cell signaling and migration. *Prog Mol Biol Transl Sci*. 2013;117:531-578.  
doi: 10.1016/b978-0-12-386931-9.00020-9
  26. Sokol CL, Luster AD. The chemokine system in innate immunity. *Cold Spring Harb Perspect Biol*. 2015;7(5):a016303.  
doi: 10.1101/cshperspect.a016303
  27. Luther SA, Cyster JG. Chemokines as regulators of T cell

- differentiation. *Nat Immunol.* 2001;2(2):102-107.  
doi: 10.1038/84205
28. Allegretti M, Cesta MC, Locati M. Allosteric modulation of chemoattractant receptors. *Front Immunol.* 2016;7:170.  
doi: 10.3389/fimmu.2016.00170
29. Schulz O, Hammerschmidt SI, Moschovakis GL, Förster R. Chemokines and chemokine receptors in lymphoid tissue dynamics. *Annu Rev Immunol.* 2016;34:203-242.  
doi: 10.1146/annurev-immunol-041015-055649
30. Stone MJ, Hayward JA, Huang C, Huma ZE, Sanchez J. Mechanisms of regulation of the chemokine-receptor network. *Int J Mol Sci.* 2017;18(2):342.  
doi: 10.3390/ijms18020342
31. López-Cotarelo P, Gómez-Moreira C, Criado-García O, Sánchez L, Rodríguez-Fernández JL. Beyond chemoattraction: Multifunctionality of chemokine receptors in leukocytes. *Trends Immunol.* 2017;38(12):927-941.  
doi: 10.1016/j.it.2017.08.004
32. Laufer JM, Legler DF. Beyond migration-Chemokines in lymphocyte priming, differentiation, and modulating effector functions. *J Leukoc Biol.* 2018;104(2):301-312.  
doi: 10.1002/jlb.2mr1217-494r
33. Cecchinato V, Ugucconi M. Insight on the regulation of chemokine activities. *J Leukoc Biol.* 2018;104(2):295-300.  
doi: 10.1002/jlb.3mr0118-014r
34. Rajarathnam K, Schnoor M, Richardson RM, Rajagopal S. How do chemokines navigate neutrophils to the target site: Dissecting the structural mechanisms and signaling pathways. *Cell Signal.* 2019;54:69-80.  
doi: 10.1016/j.cellsig.2018.11.004
35. Groom JR. Regulators of T-cell fate: Integration of cell migration, differentiation and function. *Immunol Rev.* 2019;289(1):101-114.  
doi: 10.1111/imr.12742
36. Graham GJ, Handel TM, Proudfoot AEI. Leukocyte adhesion: Reconceptualizing chemokine presentation by glycosaminoglycans. *Trends Immunol.* 2019;40(6):472-481.  
doi: 10.1016/j.it.2019.03.009
37. Michael M, Vermeren S. A neutrophil-centric view of chemotaxis. *Essays Biochem.* 2019;63(5):607-618.  
doi: 10.1042/ebc20190011
38. Crijns H, Vanheule V, Proost P. Targeting chemokine-glycosaminoglycan interactions to inhibit inflammation. *Front Immunol.* 2020;11:483.  
doi: 10.3389/fimmu.2020.00483
39. Akiyama T, Yamamoto T. Regulation of early lymphocyte development via mRNA decay catalyzed by the CCR4-NOT Complex. *Front Immunol.* 2021;12:715675.  
doi: 10.3389/fimmu.2021.715675
40. Su Z, Chen L, Niu Q, Yang B, Huang Z. Association of gene polymorphisms in CXC chemokine receptor 5 with rheumatoid arthritis susceptibility. *Iran J Allergy Asthma Immunol.* 2022;21(5):537-548.  
doi: 10.18502/ijaa.v21i5.11041
41. Shi J, Hou S, Fang Q, et al. PD-1 controls follicular T helper cell positioning and function. *Immunity.* 2018;49(2):264-274.e264.  
doi: 10.1016/j.immuni.2018.06.012
42. Kazanietz MG, Durando M, Cooke M. CXCL13 and its receptor CXCR5 in cancer: Inflammation, immune response, and beyond. *Front Endocrinol (Lausanne).* 2019;10:471.  
doi: 10.3389/fendo.2019.00471
43. Shiels MS, Pfeiffer RM, Hildesheim A, et al. Circulating inflammation markers and prospective risk for lung cancer. *J Natl Cancer Inst.* 2013;105(24):1871-1880.  
doi: 10.1093/jnci/djt309
44. Eide HA, Halvorsen AR, Sandhu V, et al. Non-small cell lung cancer is characterised by a distinct inflammatory signature in serum compared with chronic obstructive pulmonary disease. *Clin Transl Immunol.* 2016;5(11):e109.  
doi: 10.1038/cti.2016.65
45. Hussain M, Adah D, Tariq M, et al. CXCL13/CXCR5 signaling axis in cancer. *Life Sci.* 2019;227:175-186.  
doi: 10.1016/j.lfs.2019.04.053
46. Panse J, Friedrichs K, Marx A, et al. Chemokine CXCL13 is overexpressed in the tumour tissue and in the peripheral blood of breast cancer patients. *Br J Cancer.* 2008;99(6):930-938.  
doi: 10.1038/sj.bjc.6604621
47. Singh S, Singh R, Sharma PK, et al. Serum CXCL13 positively correlates with prostatic disease, prostate-specific antigen and mediates prostate cancer cell invasion, integrin clustering and cell adhesion. *Cancer Lett.* 2009;283(1):29-35.  
doi: 10.1016/j.canlet.2009.03.022
48. Ouchida T, Isoda Y, Nakamura T, et al. Establishment of a novel anti-mouse CCR1 monoclonal antibody C(1)Mab-6. *Monoclon Antib Immunodiagn Immunother.* 2024;43(2):67-74.  
doi: 10.1089/mab.2023.0032
49. Asano T, Suzuki H, Tanaka T, et al. C(3)Mab-3: A monoclonal antibody for mouse CC chemokine receptor 3 for flow cytometry. *Monoclon Antib Immunodiagn Immunother.* 2022;41(2):74-79.  
doi: 10.1089/mab.2021.0062
50. Li G, Tanaka T, Suzuki H, Kaneko MK, Kato Y. Cx1Mab-1:

- A novel anti-mouse CXCR1 monoclonal antibody for flow cytometry. *Monoclon Antib Immunodiagn Immunother.* 2024;43:59-66.  
doi: 10.1089/mab.2023.0031
51. Tanaka T, Nanamiya R, Takei J, *et al.* Development of anti-mouse CC chemokine receptor 8 monoclonal antibodies for flow cytometry. *Monoclon Antib Immunodiagn Immunother.* 2021;40(2):65-70.  
doi: 10.1089/mab.2021.0005
52. Gu X, Li D, Wu P, *et al.* Revisiting the CXCL13/CXCR5 axis in the tumor microenvironment in the era of single-cell omics: Implications for immunotherapy. *Cancer Lett.* 2024;605:217278.  
doi: 10.1016/j.canlet.2024.217278
53. Tanaka T, Li G, Asano T, *et al.* Development of a novel anti-mouse CCR2 monoclonal antibody (C<sub>2</sub>Mab-6) by N-terminal peptide immunization. *Monoclon Antib Immunodiagn Immunother.* 2022;41(2):80-86.  
doi: 10.1089/mab.2021.0063
54. Asano T, Suzuki H, Goto N, *et al.* Establishment of novel anti-mouse CCR3 monoclonal antibodies (C<sub>3</sub>mab-6 and C<sub>3</sub>Mab-7) by N-terminal peptide immunization. *Monoclon Antib Immunodiagn Immunother.* 2022;41(2):94-100.  
doi: 10.1089/mab.2021.0065
55. Takei J, Suzuki H, Asano T, *et al.* Development of a novel anti-mouse CCR4 monoclonal antibody (C<sub>4</sub>Mab-1) by N-terminal peptide immunization. *Monoclon Antib Immunodiagn Immunother.* 2022;41(2):87-93.  
doi: 10.1089/mab.2021.0064
56. Asano T, Tanaka T, Suzuki H, *et al.* Development of a novel anti-mouse CCR6 monoclonal antibody (C<sub>6</sub>Mab-13) by N-terminal peptide immunization. *Monoclon Antib Immunodiagn Immunother.* 2022;41(6):343-349.  
doi: 10.1089/mab.2022.0021
57. Kobayashi H, Asano T, Suzuki H, *et al.* Establishment of a sensitive monoclonal antibody against mouse CCR9 (C<sub>9</sub>Mab-24) for flow cytometry. *Monoclon Antib Immunodiagn Immunother.* 2023;42(1):15-21.  
doi: 10.1089/mab.2022.0032
58. Kitamura K, Suzuki H, Kaneko MK, Kato Y. Cx<sub>6</sub>Mab-1: A novel anti-mouse CXCR6 monoclonal antibody established by N-terminal peptide immunization. *Monoclon Antib Immunodiagn Immunother.* 2022;41(3):133-141.  
doi: 10.1089/mab.2022.0010
59. Satofuka H, Suzuki H, Tanaka T, *et al.* A Novel Anti-mouse CCR7 Monoclonal Antibody, C7Mab-7, Demonstrates High Sensitivity in Flow Cytometry, Western Blot, and Immunohistochemistry. [Preprints]; 2024.
60. Available from: <https://www.biolegend.com/ja-jp/products/purified-anti-mouse-cd185-cxcr5-antibody-8454> [Last accessed on 2024 May 10].
61. Hsieh CH, Jian CZ, Lin LI, *et al.* Potential role of CXCL13/CXCR5 signaling in immune checkpoint inhibitor treatment in cancer. *Cancers (Basel).* 2022;14(2):294.  
doi: 10.3390/cancers14020294
62. Crotty S. Follicular helper CD4 T cells (TFH). *Annu Rev Immunol.* 2011;29:621-663.  
doi: 10.1146/annurev-immunol-031210-101400
63. Im SJ, Hashimoto M, Gerner MY, *et al.* Defining CD8+ T cells that provide the proliferative burst after PD-1 therapy. *Nature.* 2016;537(7620):417-421.  
doi: 10.1038/nature19330
64. Brummelman J, Mazza EMC, Alvisi G, *et al.* High-dimensional single cell analysis identifies stem-like cytotoxic CD8(+) T cells infiltrating human tumors. *J Exp Med.* 2018;215(10):2520-2535.  
doi: 10.1084/jem.20180684
65. He R, Hou S, Liu C, *et al.* Follicular CXCR5- expressing CD8(+) T cells curtail chronic viral infection. *Nature.* 2016;537(7620):412-428.  
doi: 10.1038/nature19317
66. Kallies A, Zehn D, Utzschneider DT. Precursor exhausted T cells: Key to successful immunotherapy? *Nat Rev Immunol.* 2020;20(2):128-136.  
doi: 10.1038/s41577-019-0223-7
67. Thommen DS, Koelzer VH, Herzig P, *et al.* A transcriptionally and functionally distinct PD-1(+) CD8(+) T cell pool with predictive potential in non-small-cell lung cancer treated with PD-1 blockade. *Nat Med.* 2018;24(7):994-1004.  
doi: 10.1038/s41591-018-0057-z
68. De Chaisemartin L, Goc J, Damotte D, *et al.* Characterization of chemokines and adhesion molecules associated with T cell presence in tertiary lymphoid structures in human lung cancer. *Cancer Res.* 2011;71(20):6391-6399.  
doi: 10.1158/0008-5472.Can-11-0952
69. Mitkin NA, Hook CD, Schwartz AM, *et al.* p53-dependent expression of CXCR5 chemokine receptor in MCF-7 breast cancer cells. *Sci Rep.* 2015;5:9330.  
doi: 10.1038/srep09330
70. Mitkin NA, Muratova AM, Sharonov GV, *et al.* p63 and p73 repress CXCR5 chemokine receptor gene expression in p53-deficient MCF-7 breast cancer cells during genotoxic stress. *Biochim Biophys Acta Gene Regul Mech.* 2017;1860(12):1169-1178.  
doi: 10.1016/j.bbagr.2017.10.003
71. Takei J, Kaneko MK, Ohishi T, *et al.* A defucosylated

- antiCD44 monoclonal antibody 5mG2af exerts antitumor effects in mouse xenograft models of oral squamous cell carcinoma. *Oncol Rep.* 2020;44(5):1949-1960.  
doi: 10.3892/or.2020.7735
72. Hosono H, Takei J, Ohishi T, *et al.* AntiEGFR monoclonal antibody 134mG2a exerts antitumor effects in mouse xenograft models of oral squamous cell carcinoma. *Int J Mol Med.* 2020;46(4):1443-1452.  
doi: 10.3892/ijmm.2020.4700
73. Itai S, Ohishi T, Kaneko MK, *et al.* Anti-podocalyxin antibody exerts antitumor effects via antibody-dependent cellular cytotoxicity in mouse xenograft models of oral squamous cell carcinoma. *Oncotarget.* 2018;9(32):22480-22497.  
doi: 10.18632/oncotarget.25132
74. Liu T, Liu Y, Liu CX, Jiang YM. CXCL13 is elevated in inflammatory bowel disease in mice and humans and is implicated in disease pathogenesis. *Front Immunol.* 2022;13:997862.  
doi: 10.3389/fimmu.2022.997862